

## Product datasheet for **AP51099PU-N**

### Placental lactogen (CSH1) (C-term) Rabbit Polyclonal Antibody

#### Product data:

Product Type:	Primary Antibodies
Applications:	IHC, WB
Recommended Dilution:	<b>ELISA:</b> 1/1000. <b>Western blot:</b> 1/100 - 1/500. <b>Immunohistochemistry on paraffin sections:</b> 1/50 - 1/100.
Reactivity:	Human
Host:	Rabbit
Isotype:	Ig
Clonality:	Polyclonal
Immunogen:	KLH conjugated synthetic peptide between 180-208 amino acids from the C-terminal region of human CSH1
Specificity:	This antibody reacts to human CSH1.
Formulation:	PBS State: Aff - Purified State: Liquid purified Ig fraction Preservative: 0.09% (W/V) sodium azide.
Concentration:	lot specific
Purification:	Affinity chromatography on Protein A
Conjugation:	Unconjugated
Storage:	Store undiluted at 2-8°C for one month or (in aliquots) at -20°C for longer. Avoid repeated freezing and thawing.
Stability:	Shelf life: one year from despatch.
Predicted Protein Size:	25020 Da
Gene Name:	chorionic somatomammotropin hormone 1
Database Link:	<a href="#">Entrez Gene 1442 Human</a> <a href="#">P0DML2</a>



[View online »](#)

**Background:**

The protein encoded by this gene is a member of the somatotropin/prolactin family of hormones and plays an important role in growth control. The gene is located at the growth hormone locus on chromosome 17 along with four other related genes in the same transcriptional orientation; an arrangement which is thought to have evolved by a series of gene duplications. Although the five genes share a remarkably high degree of sequence identity, they are expressed selectively in different tissues. Alternative splicing generates additional isoforms of each of the five growth hormones, leading to further diversity and potential for specialization. This particular family member is expressed mainly in the placenta and utilizes multiple transcription initiation sites. Expression of the identical mature proteins for chorionic somatomammotropin hormones 1 and 2 is upregulated during development, although the ratio of 1 to 2 increases by term. Mutations in this gene result in placental lactogen deficiency and Silver-Russell syndrome. [provided by RefSeq].

**Synonyms:**

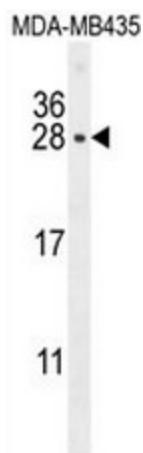
Choriomammotropin, CSH1, CSH2, CSA, HPL

**Protein Families:**

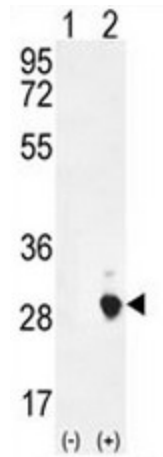
Druggable Genome

**Protein Pathways:**

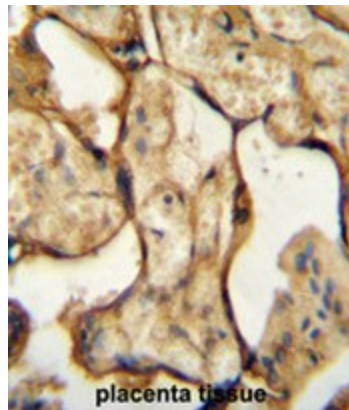
Jak-STAT signaling pathway, Neuroactive ligand-receptor interaction

**Product images:**

CSH1 Antibody (C-term) western blot analysis in MDA-MB435 cell line lysates (35ug/lane). This demonstrates the CSH1 antibody detected the CSH1 protein (arrow).



Western blot analysis of CSH1 (arrow) using rabbit polyclonal CSH1 Antibody (C-term). 293 cell lysates (2 ug/lane) either nontransfected (Lane 1) or transiently transfected (Lane 2) with the CSH1 gene.



CSH1 Antibody (C-term) immunohistochemistry analysis in formalin fixed and paraffin embedded human placenta tissue followed by peroxidase conjugation of the secondary antibody and DAB staining. This data demonstrates the use of the CSH1 Antibody (C-term) for immunohistochemistry. Clinical relevance has not been evaluated.