

## Product datasheet for **AP51097PU-N**

### GM CSF (CSF2) (Center) Rabbit Polyclonal Antibody

#### Product data:

Product Type:	Primary Antibodies
Applications:	FC, IF, IHC, WB
Recommended Dilution:	<b>ELISA:</b> 1/1000. <b>Western blot:</b> 1/1000. <b>Immunohistochemistry on Paraffin Sections:</b> 1/50-1/100. <b>Flow Cytometry:</b> 1/10-1/50. <b>Immunofluorescence:</b> 1/10 1/50.
Reactivity:	Human
Host:	Rabbit
Isotype:	Ig
Clonality:	Polyclonal
Immunogen:	KLH conjugated synthetic peptide between 59-85 amino acids from the Central region of Human CSF2
Specificity:	This antibody reacts to human CSF2.
Formulation:	PBS State: Aff - Purified State: Liquid purified Ig fraction Preservative: 0.09% (W/V) Sodium Azide
Concentration:	lot specific
Purification:	Protein A Chromatography, followed by peptide affinity purification
Conjugation:	Unconjugated
Storage:	Store undiluted at 2-8°C for one month or (in aliquots) at -20°C for longer. Avoid repeated freezing and thawing.
Stability:	Shelf life: one year from despatch.
Predicted Protein Size:	16295 Da
Gene Name:	colony stimulating factor 2
Database Link:	<a href="#">Entrez Gene 1437 Human P04141</a>



[View online »](#)

**Background:**

CSF2 is a cytokine that controls the production, differentiation, and function of granulocytes and macrophages. The active form of the protein is found extracellularly as a homodimer. This gene has been localized to a cluster of related genes at chromosome region 5q31, which is known to be associated with interstitial deletions in the 5q- syndrome and acute myelogenous leukemia. Other genes in the cluster include those encoding interleukins 4, 5, and 13. [provided by RefSeq].

**Synonyms:**

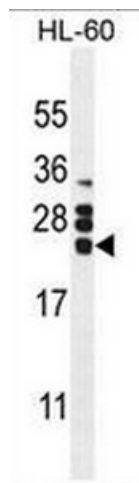
CSF2, GMCSF, Sargramostim, Molgramostin

**Protein Families:**

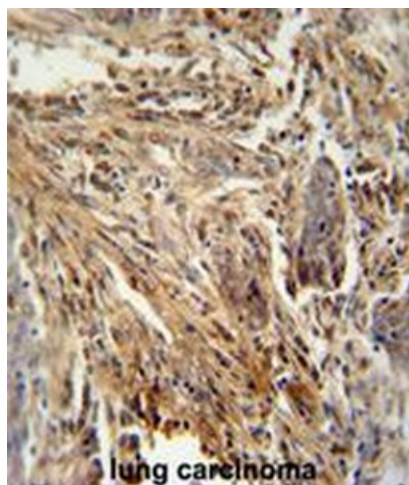
Druggable Genome, ES Cell Differentiation/IPS, Secreted Protein

**Protein Pathways:**

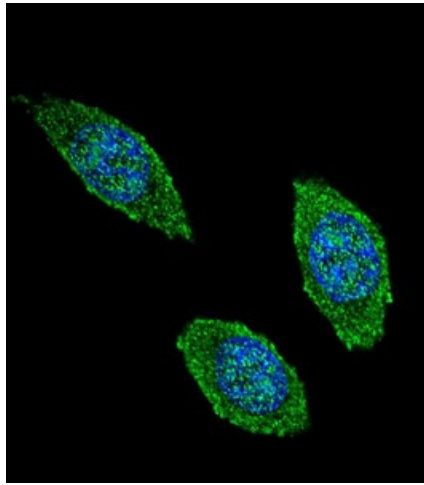
Cytokine-cytokine receptor interaction, Fc epsilon RI signaling pathway, Hematopoietic cell lineage, Jak-STAT signaling pathway, Natural killer cell mediated cytotoxicity, T cell receptor signaling pathway

**Product images:**


CSF2 Antibody (Center) western blot analysis in HL60 cell line lysates (35ug/lane). This demonstrates the CSF2 antibody detected the CSF2 protein (arrow).

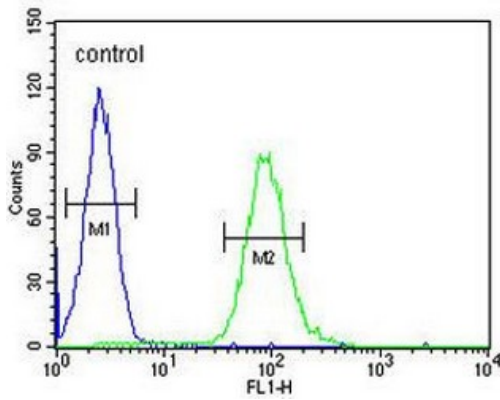


CSF2 antibody (Center) immunohistochemistry analysis in formalin fixed and paraffin embedded human lung carcinoma followed by peroxidase conjugation of the secondary antibody and DAB staining. This data demonstrates the use of the CSF2 antibody (Center) for immunohistochemistry. Clinical relevance has not been evaluated.



Confocal immunofluorescent analysis of CSF2 Antibody (Center) with 293 cell followed by Alexa Fluor 488-conjugated goat anti-rabbit IgG (green). DAPI was used to stain the cell nuclear (blue).

**HL-60**



CSF2 Antibody (Center) flow cytometric analysis of HL-60 cells (right histogram) compared to a negative control cell (left histogram). FITC-conjugated goat-anti-rabbit secondary antibodies were used for the analysis.