

## Product datasheet for **AP51096PU-N**

### CSDE1 (C-term) Rabbit Polyclonal Antibody

#### Product data:

Product Type:	Primary Antibodies
Applications:	WB
Recommended Dilution:	<b>ELISA:</b> 1/1000. <b>Western blot:</b> 1/100 - 1/500.
Reactivity:	Human
Host:	Rabbit
Isotype:	Ig
Clonality:	Polyclonal
Immunogen:	KLH conjugated synthetic peptide between 587-615 amino acids from the C-terminal region of human CSDE1
Specificity:	This antibody reacts to human CSDE1.
Formulation:	PBS State: Aff - Purified State: Liquid purified Ig fraction Preservative: 0.09% (W/V) sodium azide
Concentration:	lot specific
Purification:	Affinity chromatography on Protein A
Conjugation:	Unconjugated
Storage:	Store undiluted at 2-8°C for one month or (in aliquots) at -20°C for longer. Avoid repeated freezing and thawing.
Stability:	Shelf life: one year from despatch.
Predicted Protein Size:	88885 Da
Gene Name:	cold shock domain containing E1
Database Link:	<a href="#">Entrez Gene 7812 Human</a> <a href="#">O75534</a>



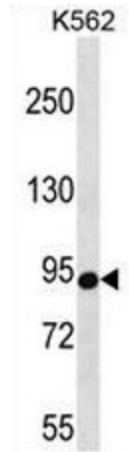
[View online »](#)

**Background:** CSDE1 is a RNA-binding protein. Required for internal initiation of translation of human rhinovirus RNA. May be involved in translationally coupled mRNA turnover. Implicated with other RNA-binding proteins in the cytoplasmic deadenylation/translational and decay interplay of the FOS mRNA mediated by the major coding-region determinant of instability (mCRD) domain.

**Synonyms:** D1S155E, KIAA0885, NRU

**Protein Families:** Transcription Factors

**Product images:**



CSDE1 Antibody (C-term) western blot analysis in K562 cell line lysates (35ug/lane). This demonstrates the CSDE1 antibody detected the CSDE1 protein (arrow).