

Product datasheet for **AP51094PU-N**

CSAD (Center) Rabbit Polyclonal Antibody

Product data:

Product Type:	Primary Antibodies
Applications:	IHC, WB
Recommended Dilution:	ELISA: 1/1000. Western blot: 1/100 - 1/500. Immunohistochemistry on paraffin sections: 1/50 - 1/100.
Reactivity:	Human
Host:	Rabbit
Isotype:	Ig
Clonality:	Polyclonal
Immunogen:	KLH conjugated synthetic peptide between 204-234 amino acids from the Central region of human CSAD
Specificity:	This antibody reacts to human CSAD.
Formulation:	PBS State: Aff - Purified State: Liquid purified Ig fraction Preservative: 0.09% (W/V) sodium azide
Concentration:	lot specific
Purification:	Affinity chromatography on Protein A
Conjugation:	Unconjugated
Storage:	Store undiluted at 2-8°C for one month or (in aliquots) at -20°C for longer. Avoid repeated freezing and thawing.
Stability:	Shelf life: one year from despatch.
Predicted Protein Size:	55023 Da
Gene Name:	cysteine sulfinic acid decarboxylase
Database Link:	Entrez Gene 51380 Human Q9Y600



[View online »](#)

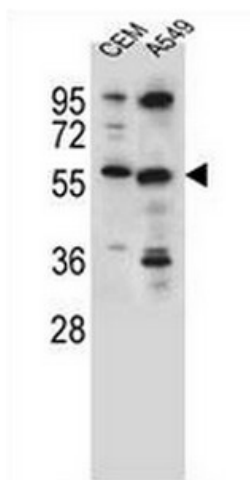
Background: Cysteine sulfinic acid decarboxylase (CSAD) catalyses the penultimate and rate limiting step of taurine synthesis. Taurine is an amino sulphonic acid and is one of the most abundant amino acids in the brain. It has been found to be essential to a number of biological processes such as development of the brain and eye, reproduction, diabetes, osmoregulation as well as the anti-inflammatory activity of leukocytes.

Synonyms: Sulfinioalanine decarboxylase, CSD

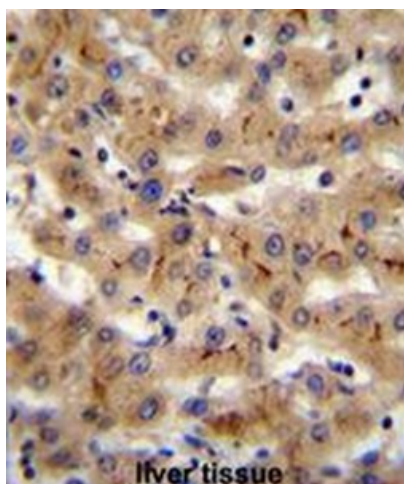
Protein Families: Druggable Genome

Protein Pathways: Metabolic pathways, Taurine and hypotaurine metabolism

Product images:



CSAD Antibody (Center) western blot analysis in CEM, A549 cell line lysates (35ug/lane). This demonstrates the CSAD antibody detected the CSAD protein (arrow).



CSAD Antibody (Center) immunohistochemistry analysis in formalin fixed and paraffin embedded human liver tissue followed by peroxidase conjugation of the secondary antibody and DAB staining. This data demonstrates the use of CSAD Antibody (Center) for immunohistochemistry. Clinical relevance has not been evaluated.