

Product datasheet for **AP51083PU-N**

CRIP2 (C-term) Rabbit Polyclonal Antibody

Product data:

| | |
|-------------------------|--|
| Product Type: | Primary Antibodies |
| Applications: | WB |
| Recommended Dilution: | ELISA: 1/1000. Western blot: 1/100 - 1/500. |
| Reactivity: | Human |
| Host: | Rabbit |
| Isotype: | Ig |
| Clonality: | Polyclonal |
| Immunogen: | KLH conjugated synthetic peptide between 178-208 amino acids from the C-terminal region of human CRIP2 |
| Specificity: | This antibody reacts to human CRIP2. |
| Formulation: | PBS State: Aff - Purified State: Liquid purified Ig fraction Preservative: 0.09% (W/V) sodium azide |
| Concentration: | lot specific |
| Purification: | Affinity chromatography on Protein A |
| Conjugation: | Unconjugated |
| Storage: | Store undiluted at 2-8°C for one month or (in aliquots) at -20°C for longer. Avoid repeated freezing and thawing. |
| Stability: | Shelf life: one year from despatch. |
| Predicted Protein Size: | 22493 Da |
| Gene Name: | cysteine rich protein 2 |
| Database Link: | Entrez Gene 1397 Human P52943 |



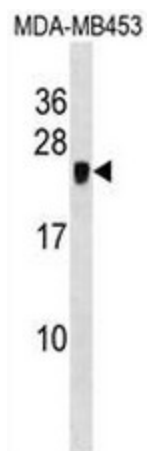
[View online »](#)

Background:

CRIP2 is a 208-amino acid protein containing 2 LIM domains and shares 93% amino acid sequence identity with its rat homolog, called Esp1 or Crp2. Northern blot analysis showed widespread tissue expression of the 1.3-kb CRIP2 mRNA, with the highest level of expression found in heart. In testis, a second 1.7-kb mRNA was also detected.

Synonyms:

CRP2, CRIP2, CRP2, Protein ESP1

Product images:

CRIP2 Antibody (C-term) western blot analysis in MDA-MB453 cell line lysates (35ug/lane). This demonstrates the CRIP2 antibody detected the CRIP2 protein (arrow).