

## Product datasheet for **AP51081PU-N**

### Corticotropin Releasing Factor (CRH) (C-term) Rabbit Polyclonal Antibody

#### Product data:

Product Type:	Primary Antibodies
Applications:	WB
Recommended Dilution:	<b>ELISA:</b> 1/1000. <b>Western Blot:</b> 1/100-1/500.
Reactivity:	Human
Host:	Rabbit
Isotype:	Ig
Clonality:	Polyclonal
Specificity:	This antibody recognizes Human Corticoliberin (C-term).
Formulation:	PBS State: Aff - Purified State: Liquid purified Ig fraction Preservative: 0.09% Sodium Azide
Concentration:	lot specific
Purification:	Affinity Chromatography on Protein A
Conjugation:	Unconjugated
Storage:	Store undiluted at 2-8°C for one month or (in aliquots) at -20°C for longer. Avoid repeated freezing and thawing.
Stability:	Shelf life: one year from despatch.
Gene Name:	corticotropin releasing hormone
Database Link:	<a href="#">Entrez Gene 1392 Human P06850</a>



[View online »](#)

**Background:** Corticotropin-releasing hormone is secreted by the paraventricular nucleus (PVN) of the hypothalamus in response to stress. Marked reduction in this protein has been observed in association with Alzheimer disease and autosomal recessive hypothalamic corticotropin deficiency has multiple and potentially fatal metabolic consequences including hypoglycemia and hepatitis. In addition to production in the hypothalamus, this protein is also synthesized in peripheral tissues, such as T lymphocytes and is highly expressed in the placenta. In the placenta it is a marker that determines the length of gestation and the timing of parturition and delivery. A rapid increase in circulating levels of the hormone occurs at the onset of parturition, suggesting that, in addition to its metabolic functions, this protein may act as a trigger for parturition.

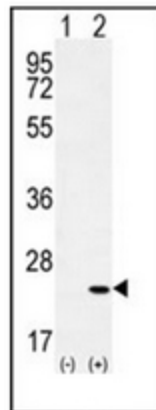
**Synonyms:** CRF, CRH, Corticotropin-Releasing Hormone, Corticotropin-Releasing Factor

**Note:** **Molecular Weight:** 21422 Da

**Protein Families:** Druggable Genome, Secreted Protein

**Protein Pathways:** Long-term depression

### Product images:



Western blot analysis of CRH (arrow) using Corticotropin Releasing Factor (C-term) Rabbit Polyclonal Antibody (Cat. No. AP51081PU-N). 293 cell lysates (2 ug/lane) either nontransfected (Lane 1) or transiently transfected (Lane 2) with the CRH gene.