

## Product datasheet for **AP51080PU-N**

### Corticotropin Releasing Factor Receptor 2 (CRHR2) Rabbit Polyclonal Antibody

#### Product data:

|                       |  |
|-----------------------|--|
| Product Type:         | Primary Antibodies   |
| Applications:         | FC, IHC, WB  |
| Recommended Dilution: | <b>ELISA:</b> 1/1000.<br><b>Western blotting:</b> 1/100-1/500.<br><b>Flow Cytometry:</b> 1/10-1/50.<br><b>Immunohistochemistry on Paraffin Sections:</b> 1/50-1/100. |
| Reactivity:           | Human  |
| Host:                 | Rabbit   |
| Isotype:              | Ig   |
| Clonality:            | Polyclonal   |
| Immunogen:            | KLH conjugated synthetic peptide selected from the Human CRFR2D  |
| Specificity:          | This antibody recognizes CRFR2D  |
| Formulation:          | PBS<br>State: Aff - Purified<br>State: Liquid purified Ig fraction<br>Preservative: 0.09% (W/V) Sodium Azide   |
| Concentration:        | lot specific   |
| Purification:         | Peptide Affinity Chromatography on Protein A   |
| Conjugation:          | Unconjugated   |
| Storage:              | Store the antibody undiluted at 2-8°C for one month or (in aliquots) at -20°C for longer.<br>Avoid repeated freezing and thawing.                                    |
| Stability:            | Shelf life: one year from despatch.  |
| Gene Name:            | corticotropin releasing hormone receptor 2   |
| Database Link:        | <a href="#">Entrez Gene 1395 Human Q13324</a>  |



[View online »](#)

**Background:** Liaw et al. (1996) [PubMed 8536644] stated that there are 2 G protein-coupled corticotropin-releasing hormone (CRH; MIM 122560) receptors, CRHR1 (MIM 122561) and CRHR2, which they termed the CRF2 receptor. CRH is a 41-amino acid peptide synthesized in the hypothalamus that is the principal neuroregulator of the hypothalamic-pituitary-adrenocortical axis and plays an important role in coordinating the endocrine, autonomic, and behavioral responses to stress and immune challenge.

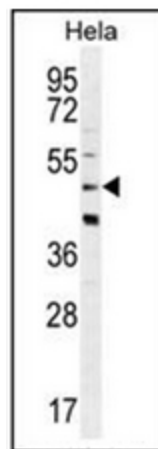
**Synonyms:** Corticotropin-releasing factor receptor 2, CRF-R 2, CRF2, CRF2R, CRH2R

**Note:** **Molecular Weight:** 47688 Da

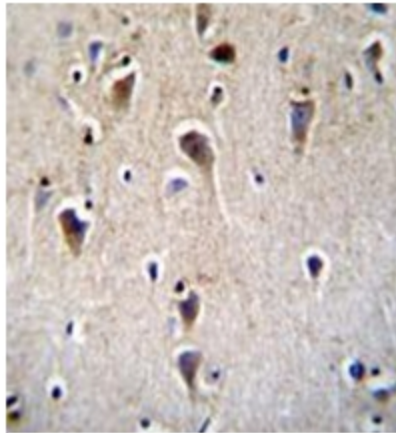
**Protein Families:** Druggable Genome, Transmembrane

**Protein Pathways:** Neuroactive ligand-receptor interaction

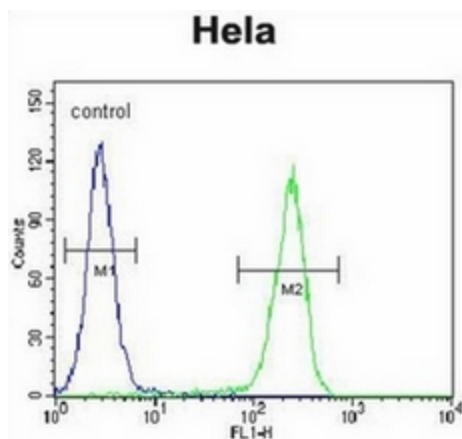
### Product images:



Western blot analysis in HeLa cell line lysates using CRFR2D Antibody (35ug/lane). This demonstrates the CRFR2D antibody detected the CRFR2D protein (arrow).



Immunohistochemistry analysis in formalin fixed and paraffin embedded human brain tissue using CRFR2D Antibody followed by peroxidase conjugation of the secondary antibody and DAB staining. This data demonstrates the use of CRFR2D Antibody for immunohistochemistry. Clinical relevance has not been evaluated.



Flow cytometric analysis of HeLa cells using CRFR2D Antibody (right histogram) compared to a negative control cell (left histogram). FITC-conjugated Goat-anti-Rabbit secondary antibodies were used for the analysis.