

## Product datasheet for **AP51079PU-N**

### Corticotropin Releasing Factor Receptor 2 (CRHR2) Rabbit Polyclonal Antibody

#### Product data:

Product Type:	Primary Antibodies
Applications:	FC, IHC, WB
Recommended Dilution:	<b>ELISA:</b> 1/1000. <b>Western blot:</b> 1/100 - 1/500. <b>Immunohistochemistry on paraffin sections:</b> 1/50 - 1/100. <b>Flow Cytometry:</b> 1/10 - 1/50.
Reactivity:	Human
Host:	Rabbit
Isotype:	Ig
Clonality:	Polyclonal
Immunogen:	KLH conjugated synthetic peptide between 10-39 amino acids from human CRHR2
Specificity:	This antibody reacts to CRFR2.
Formulation:	PBS State: Aff - Purified State: Liquid purified Ig fraction Preservative: 0.09% (W/V) sodium azide
Concentration:	lot specific
Purification:	Affinity chromatography on Protein A
Conjugation:	Unconjugated
Storage:	Store undiluted at 2-8°C for one month or (in aliquots) at -20°C for longer. Avoid repeated freezing and thawing.
Stability:	Shelf life: one year from despatch.
Predicted Protein Size:	47688 Da
Gene Name:	corticotropin releasing hormone receptor 2
Database Link:	<a href="#">Entrez Gene 1395 Human Q13324</a>



[View online »](#)

**Background:**

Liaw et al. (1996) [PubMed 8536644] stated that there are 2 G protein-coupled corticotropin-releasing hormone (CRH; MIM 122560) receptors, CRHR1 (MIM 122561) and CRHR2, which they termed the CRF2 receptor. CRH is a 41-amino acid peptide synthesized in the hypothalamus that is the principal neuroregulator of the hypothalamic-pituitary-adrenocortical axis and plays an important role in coordinating the endocrine, autonomic, and behavioral responses to stress and immune challenge.

**Synonyms:**

Corticotropin-releasing factor receptor 2, CRF-R 2, CRF2, CRF2R, CRH2R

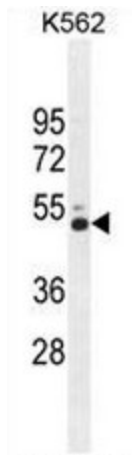
**Protein Families:**

Druggable Genome, Transmembrane

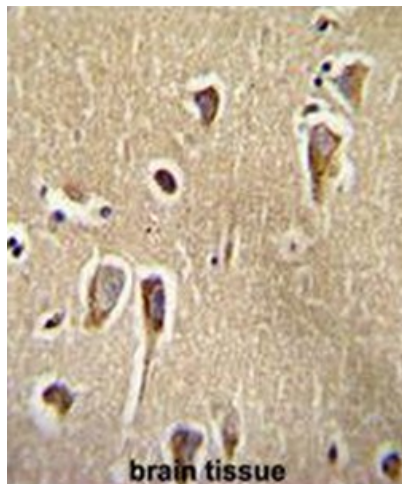
**Protein Pathways:**

Neuroactive ligand-receptor interaction

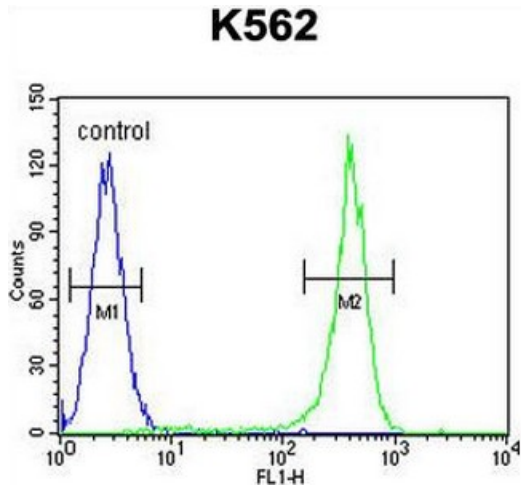
**Product images:**



CRFR2 Antibody (D35) western blot analysis in K562 cell line lysates (35ug/lane). This demonstrates the CRFR2 antibody detected the CRFR2 protein (arrow).



CRFR2 Antibody (D35) immunohistochemistry analysis in formalin fixed and paraffin embedded human brain tissue followed by peroxidase conjugation of the secondary antibody and DAB staining. This data demonstrates the use of CRFR2 Antibody (D35) for immunohistochemistry. Clinical relevance has not been evaluated.



CRFR2 Antibody (D35) flow cytometric analysis of K562 cells (right histogram) compared to a negative control cell (left histogram). FITC-conjugated goat-anti-rabbit secondary antibodies were used for the analysis.