

## Product datasheet for **AP51078PU-N**

### LINC02210-CRHR1 Rabbit Polyclonal Antibody

#### Product data:

Product Type:	Primary Antibodies
Applications:	FC, WB
Recommended Dilution:	<b>ELISA:</b> 1/1000. <b>Western blot:</b> 1/100 - 1/500. <b>Flow Cytometry:</b> 1/10 - 1/50.
Reactivity:	Human
Host:	Rabbit
Isotype:	Ig
Clonality:	Polyclonal
Immunogen:	KLH conjugated synthetic peptide between 95-128 amino acids from human CRHR1
Specificity:	This antibody reacts to human CRFR1.
Formulation:	PBS State: Aff - Purified State: Liquid purified Ig fraction Preservative: 0.09% (W/V) sodium azide
Concentration:	lot specific
Purification:	Affinity chromatography on Protein A
Conjugation:	Unconjugated
Storage:	Store undiluted at 2-8°C for one month or (in aliquots) at -20°C for longer. Avoid repeated freezing and thawing.
Stability:	Shelf life: one year from despatch.
Predicted Protein Size:	50719 Da
Gene Name:	LINC02210-CRHR1 readthrough
Database Link:	<a href="#">Entrez Gene 1394 Human</a> <a href="#">Entrez Gene 104909134 Human</a> <a href="#">P34998</a>



[View online »](#)

**Background:**

This gene encodes a G-protein coupled receptor that binds neuropeptides of the corticotropin releasing hormone family that are major regulators of the hypothalamic-pituitary-adrenal pathway. The encoded protein is essential for the activation of signal transduction pathways that regulate diverse physiological processes including stress, reproduction, immune response and obesity. Alternative splicing results in multiple transcript variants.

**Synonyms:**

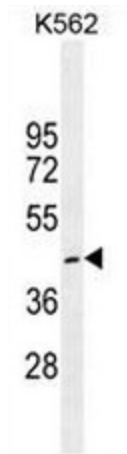
CRHR-1, CRFR, CRFR1, CRHR, Corticotropin-releasing factor receptor 1, CRF-R, CRF1, Corticotropin-releasing hormone receptor 1, CRH-R 1

**Protein Families:**

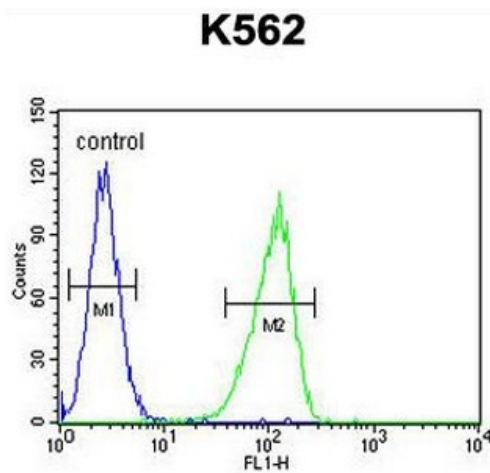
Druggable Genome, GPCR, Transmembrane

**Protein Pathways:**

Long-term depression, Neuroactive ligand-receptor interaction

**Product images:**


CRFR1 Antibody western blot analysis in K562 cell line lysates (35ug/lane). This demonstrates the CRFR1 antibody detected the CRFR1 protein (arrow).



CRFR1 Antibody (Q103) flow cytometric analysis of K562 cells (right histogram) compared to a negative control cell (left histogram). FITC-conjugated goat-anti-rabbit secondary antibodies were used for the analysis.