

Product datasheet for **AP51077PU-N**

CREM (C-term) Rabbit Polyclonal Antibody

Product data:

Product Type:	Primary Antibodies
Applications:	FC, WB
Recommended Dilution:	ELISA: 1/1000. Western blot: 1/50 - 1/100. Flow Cytometry: 1/10 - 1/50.
Reactivity:	Human
Host:	Rabbit
Isotype:	Ig
Clonality:	Polyclonal
Immunogen:	KLH conjugated synthetic peptide between 277~307 amino acids from the C-terminal region of human CREM
Specificity:	This antibody reacts to Human CREM.
Formulation:	PBS State: Purified State: Liquid purified Ig fraction Preservative: 0.09% (W/V) sodium azide
Concentration:	lot specific
Purification:	Saturated Ammonium Sulfate (SAS) precipitation
Conjugation:	Unconjugated
Storage:	Store undiluted at 2-8°C for one month or (in aliquots) at -20°C for longer. Avoid repeated freezing and thawing.
Stability:	Shelf life: one year from despatch.
Predicted Protein Size:	26513 Da Isoform Da
Gene Name:	cAMP responsive element modulator
Database Link:	Entrez Gene 1390 Human Q03060



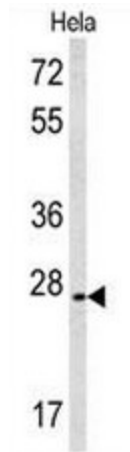
[View online »](#)

Background: CREM is a bZIP transcription factor that binds to the cAMP responsive element found in many viral and cellular promoters. It is an important component of cAMP-mediated signal transduction during the spermatogenic cycle, as well as other complex processes.

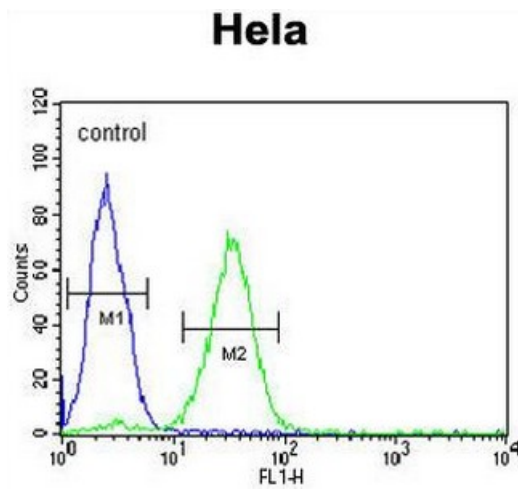
Synonyms: ICER

Protein Families: Druggable Genome, Transcription Factors

Product images:



Western blot analysis of CREM Antibody (C-term) in HeLa cell line lysates (35ug/lane). CREM (arrow) was detected using the purified Pab.



CREM Antibody (C-term) flow cytometric analysis of HeLa cells (right histogram) compared to a negative control cell (left histogram). FITC-conjugated goat-anti-rabbit secondary antibodies were used for the analysis.