

## Product datasheet for **AP51076PU-N**

### CRELD2 (C-term) Rabbit Polyclonal Antibody

#### Product data:

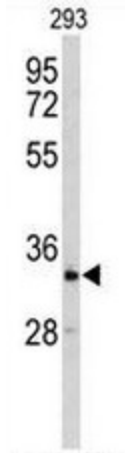
Product Type:	Primary Antibodies
Applications:	FC, WB
Recommended Dilution:	<b>ELISA:</b> 1/1000. <b>Western blot:</b> 1/100 - 1/500. <b>Flow Cytometry:</b> 1/10 - 1/50.
Reactivity:	Human
Host:	Rabbit
Isotype:	Ig
Clonality:	Polyclonal
Immunogen:	KLH conjugated synthetic peptide between 324~353 amino acids from the C-terminal region of human CRELD2
Specificity:	This antibody reacts to CRELD2.
Formulation:	PBS State: Aff - Purified State: Liquid purified Ig fraction Preservative: 0.09% (W/V) sodium azide
Concentration:	lot specific
Purification:	Affinity chromatography on Protein A
Conjugation:	Unconjugated
Storage:	Store undiluted at 2-8°C for one month or (in aliquots) at -20°C for longer. Avoid repeated freezing and thawing.
Stability:	Shelf life: one year from despatch.
Predicted Protein Size:	30;712 Da Isoform 3 Da
Gene Name:	cysteine rich with EGF like domains 2
Database Link:	<a href="#">Entrez Gene 79174 Human Q6UXH1</a>
Background:	CRELD2 may regulate transport of alpha4-beta2 neuronal acetylcholine receptor.



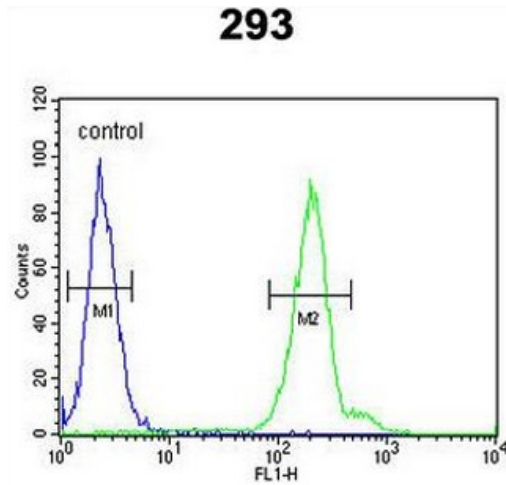
[View online »](#)

**Synonyms:** UNQ185/PRO211, MGC11256  
**Protein Families:** Druggable Genome, Secreted Protein

**Product images:**



Western blot analysis of CRELD2 Antibody (C-term) in 293 cell line lysates (35ug/lane). CRELD2 (arrow) was detected using the purified Pab.



CRELD2 Antibody (C-term) flow cytometric analysis of 293 cells (right histogram) compared to a negative control cell (left histogram). FITC-conjugated goat-anti-rabbit secondary antibodies were used for the analysis.