

Product datasheet for **AP51075PU-N**

CREG1 (N-term) Rabbit Polyclonal Antibody

Product data:

Product Type:	Primary Antibodies
Applications:	WB
Recommended Dilution:	ELISA: 1/1000. Western blot: 1/100 - 1/500.
Reactivity:	Human, Mouse
Host:	Rabbit
Isotype:	Ig
Clonality:	Polyclonal
Immunogen:	KLH conjugated synthetic peptide between 16-45 amino acids from the N-terminal region of human CREG1
Specificity:	This antibody reacts to CREG1.
Formulation:	PBS State: Aff - Purified State: Liquid purified Ig fraction Preservative: 0.09% (W/V) sodium azide
Concentration:	lot specific
Purification:	Affinity chromatography on Protein A
Conjugation:	Unconjugated
Storage:	Store undiluted at 2-8°C for one month or (in aliquots) at -20°C for longer. Avoid repeated freezing and thawing.
Stability:	Shelf life: one year from despatch.
Predicted Protein Size:	24075 Da
Gene Name:	cellular repressor of E1A stimulated genes 1
Database Link:	Entrez Gene 433375 Mouse Entrez Gene 8804 Human O75629



[View online »](#)

Background:

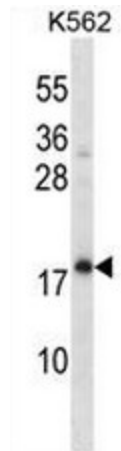
The adenovirus E1A protein both activates and represses gene expression to promote cellular proliferation and inhibit differentiation. The protein encoded by this gene antagonizes transcriptional activation and cellular transformation by E1A. This protein shares limited sequence similarity with E1A and binds both the general transcription factor TBP and the tumor suppressor pRb in vitro. This gene may contribute to the transcriptional control of cell growth and differentiation.

Synonyms:

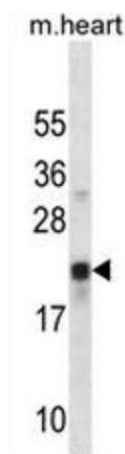
CREG

Protein Families:

Secreted Protein, Transcription Factors, Transmembrane

Product images:

CREG1 Antibody (N-term) western blot analysis in K562 cell line lysates (35ug/lane). This demonstrates the CREG1 antibody detected the CREG1 protein (arrow).



CREG1 Antibody (N-term) western blot analysis in mouse heart tissue lysates (35ug/lane). This demonstrates the CREG1 antibody detected the CREG1 protein (arrow).