

Product datasheet for **AP51070PU-N**

CRCT1 (N-term) Rabbit Polyclonal Antibody

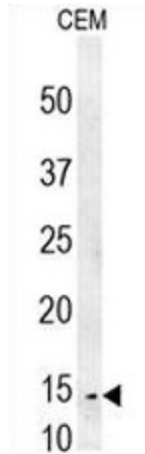
Product data:

Product Type:	Primary Antibodies
Applications:	FC, IHC, WB
Recommended Dilution:	ELISA: 1/1000. Western blot: 1/100 - 1/500. Immunohistochemistry on paraffin sections: 1/50 - 1/100. Flow Cytometry: 1/10 - 1/50.
Reactivity:	Human
Host:	Rabbit
Isotype:	Ig
Clonality:	Polyclonal
Immunogen:	KLH conjugated synthetic peptide between 1-32 amino acids from the N-terminal region of human CRCT1
Specificity:	This antibody reacts to CRCT1.
Formulation:	PBS State: Aff - Purified State: Liquid purified Ig fraction Preservative: 0.09% (W/V) sodium azide
Concentration:	lot specific
Purification:	Affinity chromatography on Protein A
Conjugation:	Unconjugated
Storage:	Store undiluted at 2-8°C for one month or (in aliquots) at -20°C for longer. Avoid repeated freezing and thawing.
Stability:	Shelf life: one year from despatch.
Predicted Protein Size:	9736 Da
Gene Name:	cysteine rich C-terminal 1
Database Link:	Entrez Gene 54544 Human Q9UGL9
Synonyms:	C1orf42, NICE1

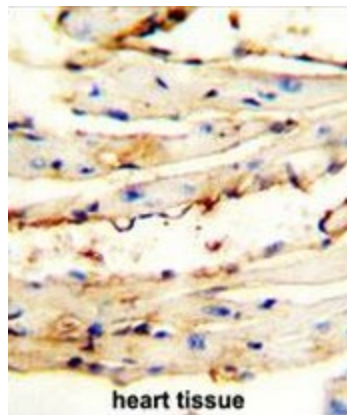


[View online »](#)

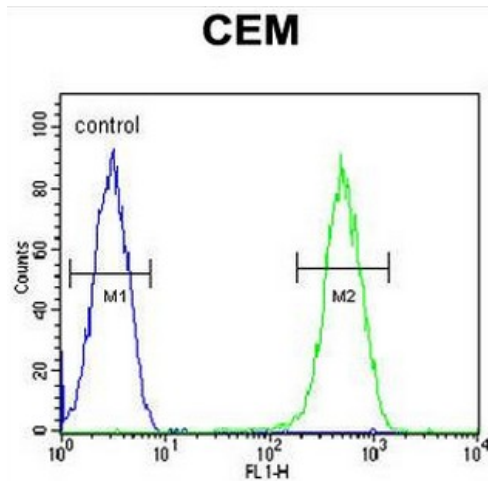
Product images:



CRCT1 Antibody (N-term) western blot analysis in CEM cell line lysates (35ug/lane). This demonstrates the CRCT1 antibody detected the CRCT1 protein (arrow).



CRCT1 antibody (N-term) immunohistochemistry analysis in formalin fixed and paraffin embedded mouse heart tissue followed by peroxidase conjugation of the secondary antibody and DAB staining. This data demonstrates the use of the CRCT1 antibody (N-term) for immunohistochemistry. Clinical relevance has not been evaluated.



CRCT1 Antibody (N-term) flow cytometric analysis of CEM cells (right histogram) compared to a negative control cell (left histogram). FITC-conjugated goat-anti-rabbit secondary antibodies were used for the analysis.