

Product datasheet for **AP51065PU-N**

CPT1C (C-term) Rabbit Polyclonal Antibody

Product data:

| | |
|-----------------------|--|
| Product Type: | Primary Antibodies |
| Applications: | WB |
| Recommended Dilution: | ELISA: 1/1000. Western Blot: 1/100-1/500. |
| Reactivity: | Human |
| Host: | Rabbit |
| Isotype: | Ig |
| Clonality: | Polyclonal |
| Immunogen: | KLH conjugated synthetic peptide between 584-614 amino acids from the C-terminal region of Human CPT1C. |
| Specificity: | This antibody recognizes Human CPT1C (C-term). |
| Formulation: | PBS State: Aff - Purified State: Liquid purified Ig fraction Preservative: 0.09% Sodium Azide |
| Concentration: | lot specific |
| Purification: | Affinity Chromatography on Protein A |
| Conjugation: | Unconjugated |
| Storage: | Store undiluted at 2-8°C for one month or (in aliquots) at -20°C for longer. Avoid repeated freezing and thawing. |
| Stability: | Shelf life: one year from despatch. |
| Gene Name: | carnitine palmitoyltransferase 1C |
| Database Link: | Entrez Gene 126129 Human Q8TCG5 |



[View online »](#)

Background:

The Cpt1 family of proteins are outer mitochondrial membrane proteins that regulate the entry into, and oxidation of fatty acids by, mitochondria. Malonyl-CoA, an intermediate in fatty acid synthesis, has been implicated as a regulatory component of the energy sensing system that feeds into hypothalamic neurons to impart energy homeostasis. Malonyl-CoA levels in the hypothalamus are dynamically regulated by fasting and feeding, altering subsequent feeding behaviour. Cpt1c, the brain-specific carnitine O-palmitoyltransferase 1, is thought to relay information about malonyl-CoA levels in hypothalamic neurons that express orexigenic and anorexigenic neuropeptides that regulate food intake and peripheral energy expenditure. Unlike other Cpt1 proteins, Cpt1c binds Malonyl-CoA but does not catalyse the transfer of the malonyl group from CoA to carnitine.

Synonyms:

Carnitine palmitoyltransferase 1C, CPT 1C

Note:

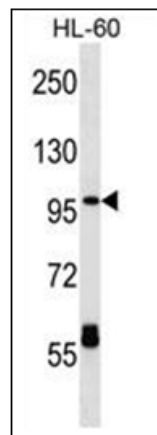
Molecular Weight: 90989 Da

Protein Families:

Druggable Genome, Transmembrane

Protein Pathways:

Adipocytokine signaling pathway, Fatty acid metabolism, PPAR signaling pathway

Product images:

Western blot analysis of CPT1C Antibody (C-term) in HL-60 cell line lysates (35ug/lane). This demonstrates the CPT1C antibody detected the CPT1C protein (arrow).