

## Product datasheet for **AP51063PU-N**

### **CPT1B (C-term) Rabbit Polyclonal Antibody**

#### **Product data:**

Product Type:	Primary Antibodies
Applications:	WB
Recommended Dilution:	<b>ELISA:</b> 1/1000. <b>Western Blot:</b> 1/100-1/500.
Reactivity:	Human
Host:	Rabbit
Isotype:	Ig
Clonality:	Polyclonal
Immunogen:	KLH conjugated synthetic peptide between 743-771 amino acids from the C-terminal region of Human CPT1B
Specificity:	This antibody recognizes Human CPT1B / CPT1-M (C-term).
Formulation:	PBS State: Aff - Purified State: Liquid purified Ig fraction Preservative: 0.09% Sodium Azide
Concentration:	lot specific
Purification:	Affinity Chromatography on Protein A
Conjugation:	Unconjugated
Storage:	Store undiluted at 2-8°C for one month or (in aliquots) at -20°C for longer. Avoid repeated freezing and thawing.
Stability:	Shelf life: one year from despatch.
Gene Name:	carnitine palmitoyltransferase 1B
Database Link:	<a href="#">Entrez Gene 1375 Human Q92523</a>



[View online »](#)

**Background:**

The protein encoded by this gene, a member of the carnitine/choline acetyltransferase family, is the rate-controlling enzyme of the long-chain fatty acid beta-oxidation pathway in muscle mitochondria. This enzyme is required for the net transport of long-chain fatty acyl-CoAs from the cytoplasm into the mitochondria. Multiple transcript variants encoding different isoforms have been found for this gene, and read-through transcripts are expressed from the upstream locus that include exons from this gene.

**Synonyms:**

Carnitine palmitoyltransferase 1B, KIAA1670

**Note:**

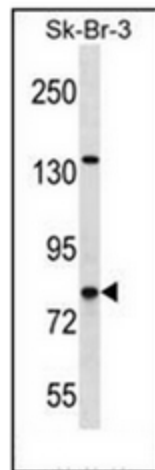
**Molecular Weight:** 87801 Da

**Protein Families:**

Druggable Genome, Transmembrane

**Protein Pathways:**

Adipocytokine signaling pathway, Fatty acid metabolism, PPAR signaling pathway

**Product images:**

Western blot analysis of CPT1B / CPT1-M Antibody (C-term) in SK-BR-3 cell line lysates (35ug/lane). This demonstrates the CPT1B antibody detected the CPT1B protein (arrow).