

Product datasheet for **AP51061PU-N**

CPSF7 (C-term) Rabbit Polyclonal Antibody

Product data:

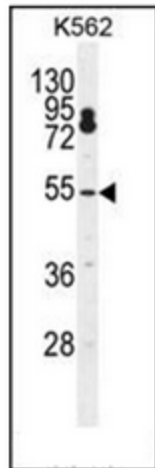
Product Type:	Primary Antibodies
Applications:	FC, WB
Recommended Dilution:	ELISA: 1/1000 Western Blot: 1/100-1/500. Flow Cytometry: 1/10-1/50.
Reactivity:	Human
Host:	Rabbit
Isotype:	Ig
Clonality:	Polyclonal
Immunogen:	KLH conjugated synthetic peptide between 434-463 amino acids from the C-terminal region of Human CPSF7.
Specificity:	This antibody recognizes Human CPSF7 (C-term)
Formulation:	PBS State: Aff - Purified State: Liquid purified Ig fraction Preservative: 0.09% Sodium Azide
Concentration:	lot specific
Purification:	Affinity Chromatography on Protein A
Conjugation:	Unconjugated
Storage:	Store undiluted at 2-8°C for one month or (in aliquots) at -20°C for longer. Avoid repeated freezing and thawing.
Stability:	Shelf life: one year from despatch.
Gene Name:	cleavage and polyadenylation specific factor 7
Database Link:	Entrez Gene 79869 Human Q8N684
Background:	CPSF7 is probable a component of the cleavage factor Im complex (CFIm) that plays a key role in pre-mRNA 3' processing. Binds to cleavage and polyadenylation RNA substrates.
Synonyms:	CPSF59, CFIm59



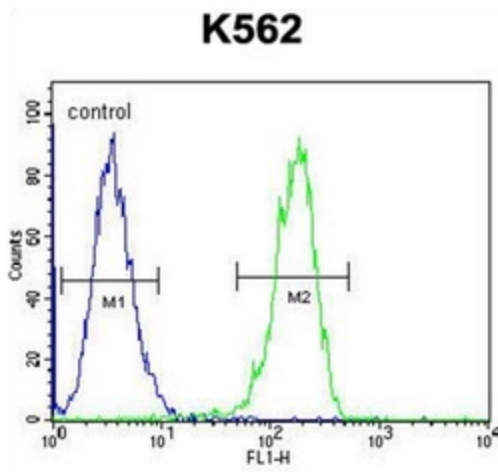
[View online »](#)

Note: **Molecular Weight:** 52050 Da

Product images:



Western blot analysis of CPSF7 Antibody (C-term) in K562 cell line lysates (35ug/lane). This demonstrates the CPSF7 antibody detected the CPSF7 protein (arrow).



Flow Cytometric analysis of K562 cells using CPSF7 Antibody (C-term) (right histogram) compared to a negative control cell (left histogram). FITC-conjugated goat-anti-rabbit secondary antibodies were used for the analysis.