

## Product datasheet for **AP51060PU-N**

### CPSF4L (C-term) Rabbit Polyclonal Antibody

#### Product data:

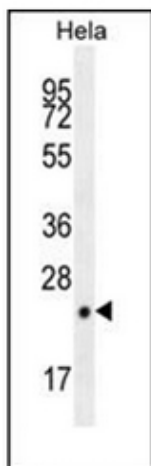
Product Type:	Primary Antibodies
Applications:	FC, WB
Recommended Dilution:	<b>ELISA:</b> 1/1000. <b>Western Blot:</b> 1/100-1/500. <b>Flow Cytometry:</b> 1/10-1/50.
Reactivity:	Human
Host:	Rabbit
Isotype:	Ig
Clonality:	Polyclonal
Immunogen:	Immunized with a KLH conjugated synthetic peptide between 150-178 amino acids from the C-terminal region of human CPSF4L
Specificity:	This antibody recognizes Human CPSF4L (C-term).
Formulation:	PBS State: Aff - Purified State: Liquid purified Ig fraction Preservative: 0.09% Sodium Azide
Concentration:	lot specific
Purification:	Affinity Chromatography on protein A
Conjugation:	Unconjugated
Storage:	Store undiluted at 2-8°C for one month or (in aliquots) at -20°C for longer. Avoid repeated freezing and thawing.
Stability:	Shelf life: one year from despatch.
Gene Name:	cleavage and polyadenylation specific factor 4-like
Database Link:	<a href="#">Entrez Gene 642843 Human</a> <a href="#">A6NMK7</a>
Background:	The specific function of the protein remains unknown
Synonyms:	Putative cleavage and polyadenylation specificity factor subunit 4-like protein



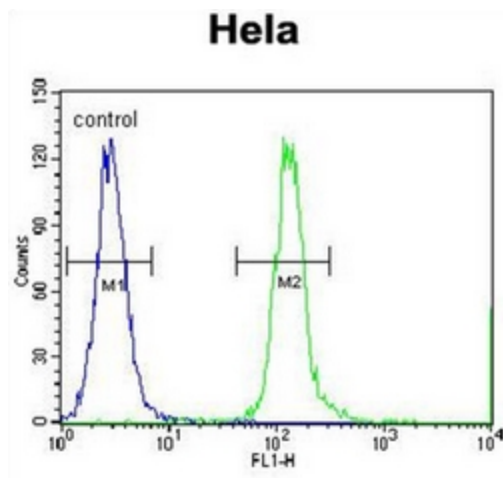
[View online »](#)

Note: **Molecular Weight:** 20727 Da

### Product images:



Western blot analysis of CPSF4L Antibody (C-term) Cat.-No AP51060PU-N in HeLa cell line lysates (35ug/lane). This demonstrates the CPSF4L antibody detected the CPSF4L protein (arrow).



Flow cytometric analysis of HeLa cells using CPSF4L Antibody (C-term) Cat.-No AP51060PU-N (right histogram) compared to a negative control cell (left histogram). FITC-conjugated Goat-anti-Rabbit secondary antibodies were used for the analysis.