

## Product datasheet for **AP51057PU-N**

### **CPSF73 (CPSF3) (Center) Rabbit Polyclonal Antibody**

#### **Product data:**

Product Type:	Primary Antibodies
Applications:	WB
Recommended Dilution:	<b>ELISA:</b> 1/1000. <b>Western Blot:</b> 1/100-1/500.
Reactivity:	Human
Host:	Rabbit
Isotype:	Ig
Clonality:	Polyclonal
Immunogen:	KLH conjugated synthetic peptide between 191-221 amino acids from the Central region of Human CPSF3.
Specificity:	This antibody recognizes CPSF3 (Center).
Formulation:	PBS State: Aff - Purified State: Liquid purified Ig fraction Preservative: 0.09% Sodium Azide
Concentration:	lot specific
Purification:	Affinity Chromatography on Protein A
Conjugation:	Unconjugated
Storage:	Store undiluted at 2-8°C for one month or (in aliquots) at -20°C for longer. Avoid repeated freezing and thawing.
Stability:	Shelf life: one year from despatch.
Gene Name:	cleavage and polyadenylation specific factor 3
Database Link:	<a href="#">Entrez Gene 51692 Human Q9UKF6</a>



[View online »](#)

**Background:**

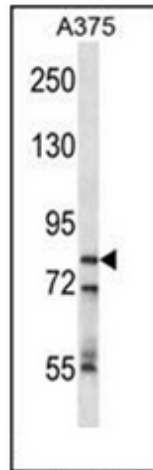
Most eukaryotic mRNA precursors (pre-mRNAs) undergo extensive maturational processing, including cleavage and polyadenylation at the 3-prime end. CPSF3 encodes the 73-kD subunit of the cleavage and polyadenylation specificity factor (CPSF) and is the pre-mRNA 3-prime-end-processing endonuclease (Mandel et al., 2006 [PubMed 17128255]).

**Synonyms:**

CPSF73, CPSF-73 kDa subunit

**Note:**

**Molecular Weight:** 77486 Da

**Product images:**

Western blot of CPSF3 Antibody analysis in A375 cell line lysates (35ug/lane). This demonstrates the CPSF3 antibody detected the CPSF3 protein (arrow).