

Product datasheet for **AP51054PU-N**

CPNE3 (C-term) Rabbit Polyclonal Antibody

Product data:

| | |
|-----------------------|---|
| Product Type: | Primary Antibodies |
| Applications: | WB |
| Recommended Dilution: | ELISA: 1/1000. Western Blot: 1/100-1/500. |
| Reactivity: | Human |
| Host: | Rabbit |
| Isotype: | Ig |
| Clonality: | Polyclonal |
| Immunogen: | KLH conjugated synthetic peptide between 506-533 amino acids from the C-terminal region of Human CPNE3. |
| Specificity: | This antibody recognizes Human Copine-3 (C-term). |
| Formulation: | PBS State: Aff - Purified State: Liquid purified Ig fraction Preservative: 0.09% Sodium Azide |
| Concentration: | lot specific |
| Purification: | Affinity Chromatography on Protein A |
| Conjugation: | Unconjugated |
| Storage: | Store undiluted at 2-8°C for one month or (in aliquots) at -20°C for longer. Avoid repeated freezing and thawing. |
| Stability: | Shelf life: one year from despatch. |
| Gene Name: | copine 3 |
| Database Link: | Entrez Gene 8895 Human O75131 |
| Background: | Calcium-dependent membrane-binding proteins may regulate molecular events at the interface of the cell membrane and cytoplasm. This gene encodes a protein which contains two type II C2 domains in the amino-terminus and an A domain-like sequence in the carboxy-terminus. The A domain mediates interactions between integrins and extracellular ligands. |

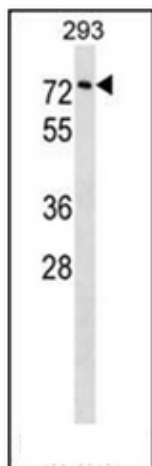


[View online »](#)

Synonyms: CPNE3, CPN3, KIAA0636, Copine III

Note: **Molecular Weight:** 60131 Da

Product images:



Western blot analysis of Copine-3 Antibody (C-term) in 293 cell line lysates (35ug/lane). This demonstrates the CPNE3 antibody detected the CPNE3 protein (arrow).