

Product datasheet for **AP51052PU-N**

Carboxypeptidase M (CPM) (Center) Rabbit Polyclonal Antibody

Product data:

Product Type:	Primary Antibodies
Applications:	WB
Recommended Dilution:	Western Blot: 1/1000
Reactivity:	Human
Host:	Rabbit
Isotype:	Ig
Clonality:	Polyclonal
Immunogen:	KLH conjugated synthetic peptide between 212-241 amino acids from the Central region of Human CPM.
Specificity:	This antibody recognizes Human Carboxypeptidase M (Center).
Formulation:	PBS State: Aff - Purified State: Liquid purified Ig fraction Preservative: 0.09% Sodium Azide
Concentration:	lot specific
Purification:	Protein A column followed by peptide affinity purification.
Conjugation:	Unconjugated
Storage:	Store undiluted at 2-8°C for one month or (in aliquots) at -20°C for longer. Avoid repeated freezing and thawing.
Stability:	Shelf life: one year from despatch.
Gene Name:	carboxypeptidase M
Database Link:	Entrez Gene 1368 Human P14384



[View online »](#)

Background:

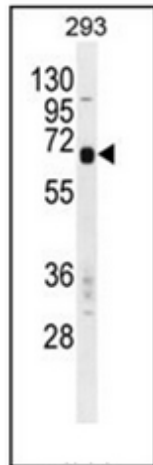
The protein encoded by this gene is a membrane-bound arginine/lysine carboxypeptidase. Its expression is associated with monocyte to macrophage differentiation. This encoded protein contains hydrophobic regions at the amino and carboxy termini and has 6 potential asparagine-linked glycosylation sites. The active site residues of carboxypeptidases A and B are conserved in this protein. Three alternatively spliced transcript variants encoding the same protein have been described for this gene. [provided by RefSeq].

Synonyms:

CPM

Note:**Molecular Weight:** 50514 Da**Protein Families:**

Druggable Genome, Protease

Product images:

Western blot analysis of Carboxypeptidase M Antibody in 293 cell line lysates (35ug/lane). This demonstrates the CPM antibody detected the CPM protein (arrow).