

Product datasheet for **AP51051PU-N**

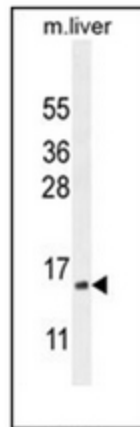
CPLX3 (Center) Rabbit Polyclonal Antibody

Product data:

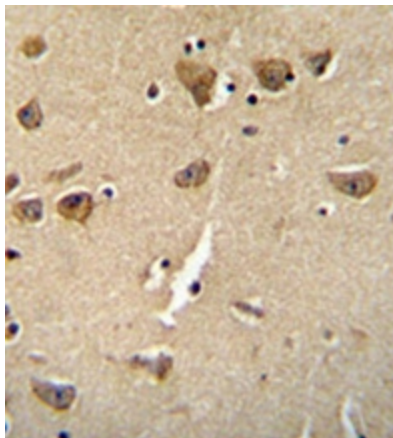
Product Type:	Primary Antibodies
Applications:	IHC, WB
Recommended Dilution:	ELISA: 1/1000. Western Blot: 1/1000. Immunohistochemistry on Paraffin Sections: 1/50-1/100.
Reactivity:	Human, Mouse
Host:	Rabbit
Isotype:	Ig
Clonality:	Polyclonal
Immunogen:	KLH conjugated synthetic peptide between 52-81 amino acids from the Central region of Human CPLX3
Specificity:	This antibody detects Complexin-3 (Center).
Formulation:	PBS containing 0.09% (W/V) Sodium Azide as preservative State: Aff - Purified State: Liquid purified Ig fraction
Concentration:	lot specific
Purification:	Protein A column; followed by peptide affinity purification
Conjugation:	Unconjugated
Storage:	Store undiluted at 2-8°C for one month or (in aliquots) at -20°C for longer. Avoid repeated freezing and thawing.
Stability:	Shelf life: one year from despatch.
Gene Name:	complexin 3
Database Link:	Entrez Gene 594855 Human Q8WVH0
Background:	Positively regulates a late step in synaptic vesicle exocytosis (By similarity).
Synonyms:	CPLX3, Nbla11589, Complexin III, CPX III
Note:	Molecular Weight: 17557 Da



[View online »](#)

Product images:

Western blot analysis of Complexin-3 Antibody (Center) in mouse liver tissue lysates (35ug/lane). This demonstrates the CPLX3 antibody detected the CPLX3 protein (arrow).



Immunohistochemistry analysis in formalin fixed and paraffin embedded human brain tissue reacted with Complexin-3 Antibody (Center), which was peroxidase conjugated to the secondary antibody and followed by DAB staining. This data demonstrates the use of the CPLX3 Antibody (Center) for immunohistochemistry. Clinical relevance has not been evaluated.