

Product datasheet for **AP51050PU-N**

CPLX1 (Center) Rabbit Polyclonal Antibody

Product data:

Product Type:	Primary Antibodies
Applications:	IHC, WB
Recommended Dilution:	ELISA: 1/1000. Western Blot: 1/1000. Immunohistochemistry on Paraffin Sections: 1/10-1/50.
Reactivity:	Human
Host:	Rabbit
Isotype:	Ig
Clonality:	Polyclonal
Immunogen:	KLH conjugated synthetic peptide between 33-60 amino acids from the Central region of Human CPLX1. Epitope: Amino acids 33- 60.
Specificity:	This antibody recognizes Human Complexin-1 (Center).
Formulation:	PBS State: Aff - Purified State: Liquid purified Ig fraction Preservative: 0.09% Sodium Azide
Concentration:	lot specific
Purification:	Affinity Chromatography on Protein A
Conjugation:	Unconjugated
Storage:	Store undiluted at 2-8°C for one month or (in aliquots) at -20°C for longer. Avoid repeated freezing and thawing.
Stability:	Shelf life: one year from despatch.
Gene Name:	complexin 1
Database Link:	Entrez Gene 10815 Human O14810



[View online »](#)

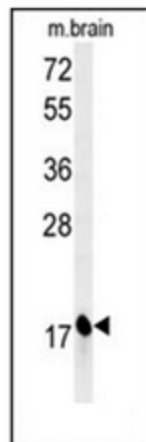
Background: CPLX1 encoded by the complexin/synaphin gene family are cytosolic proteins that function in synaptic vesicle exocytosis. These proteins bind syntaxin, part of the SNAP receptor. The protein product of this gene binds to the SNAP receptor complex and disrupts it, allowing transmitter release.

Synonyms: Complexin I, Synaphin-2, CPLX1, CPX I

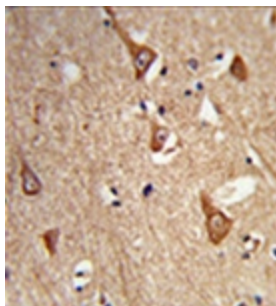
Note: **Molecular Weight:** 15030 Da

Protein Families: Druggable Genome

Product images:



Western blot analysis of Complexin-1 Antibody (Center) in Mouse brain tissue lysates (35ug/lane). CPLX1 (arrow) was detected using the purified Pab.



Formalin-fixed, paraffin-embedded human brain tissue reacted with Complexin-1 Antibody (Center), which was peroxidase-conjugated to the secondary antibody, followed by DAB staining. This data demonstrates the use of this antibody for immunohistochemistry; clinical relevance has not been evaluated.