

## Product datasheet for **AP51048PU-N**

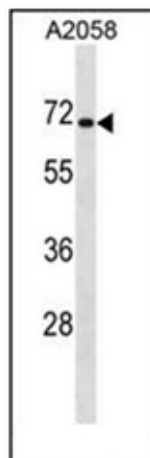
### **CPEB1 (C-term) Rabbit Polyclonal Antibody**

#### **Product data:**

Product Type:	Primary Antibodies
Applications:	WB
Recommended Dilution:	<b>ELISA:</b> 1/1000. <b>Western Blot:</b> 1/100-1/500.
Reactivity:	Human
Host:	Rabbit
Isotype:	Ig
Clonality:	Polyclonal
Immunogen:	KLH conjugated synthetic peptide between 446-475 amino acids from the C-terminal region of Human CPEB1.
Specificity:	This antibody recognizes Human CPEB1 (C-term).
Formulation:	PBS State: Aff - Purified State: Liquid purified Ig fraction Preservative: 0.09% Sodium Azide
Concentration:	lot specific
Purification:	Affinity Chromatography on Protein A
Conjugation:	Unconjugated
Storage:	Store undiluted at 2-8°C for one month or (in aliquots) at -20°C for longer. Avoid repeated freezing and thawing.
Stability:	Shelf life: one year from despatch.
Gene Name:	cytoplasmic polyadenylation element binding protein 1
Database Link:	<a href="#">Entrez Gene 64506 Human</a> <a href="#">Q9BZB8</a>
Synonyms:	CPE-binding protein 1, CPE-BP1, hCPEB-1, h-CEBP
Note:	<b>Molecular Weight:</b> 62595 Da
Protein Pathways:	Dorso-ventral axis formation, Oocyte meiosis, Progesterone-mediated oocyte maturation



[View online »](#)

**Product images:**

Western blot analysis of CPEB1 Antibody (C-term) in A2058 cell line lysates (35ug/lane). This demonstrates the CPEB1 antibody detected the CPEB1 protein (arrow).