

## Product datasheet for **AP51046PU-N**

### CPA6 (Center) Rabbit Polyclonal Antibody

#### Product data:

Product Type:	Primary Antibodies
Applications:	WB
Recommended Dilution:	<b>ELISA:</b> 1/1000. <b>Western Blot:</b> 1/100-1/500.
Reactivity:	Human
Host:	Rabbit
Isotype:	Ig
Clonality:	Polyclonal
Immunogen:	KLH conjugated synthetic peptide between 292-323 amino acids from the Central region of Human CPA6.
Specificity:	This antibody recognizes Human Carboxypeptidase A6 (Center).
Formulation:	PBS State: Aff - Purified State: Liquid purified Ig fraction Preservative: 0.09% Sodium Azide
Concentration:	lot specific
Purification:	Affinity Chromatography on Protein A
Conjugation:	Unconjugated
Storage:	Store undiluted at 2-8°C for one month or (in aliquots) at -20°C for longer. Avoid repeated freezing and thawing.
Stability:	Shelf life: one year from despatch.
Gene Name:	carboxypeptidase A6
Database Link:	<a href="#">Entrez Gene 57094 Human Q8N4T0</a>



[View online »](#)

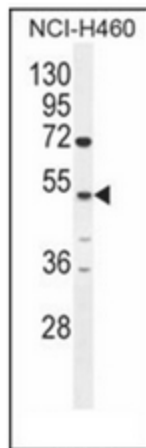
**Background:** The protein encoded by this gene belongs to the family of carboxypeptidases, which catalyze the release of C-terminal amino acid, and have functions ranging from digestion of food to selective biosynthesis of neuroendocrine peptides. Polymorphic variants and a reciprocal translocation t(6;8)(q26;q13) involving this gene, have been associated with Duane retraction syndrome.

**Synonyms:** CPA6, CPAH, Carboxypeptidase B

**Note:** **Molecular Weight:** 51008 Da

**Protein Families:** Protease, Secreted Protein

**Product images:**



Western blot analysis of Carboxypeptidase A6 Antibody in NCI-H460 cell line lysates (35ug/lane). This demonstrates the CPA6 antibody detected the CPA6 protein (arrow).