

Product datasheet for **AP51041PU-N**

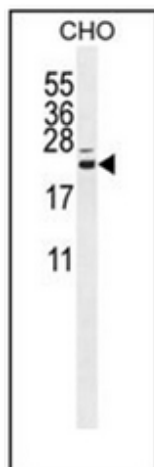
C16orf13 (METTL26) (N-term) Rabbit Polyclonal Antibody

Product data:

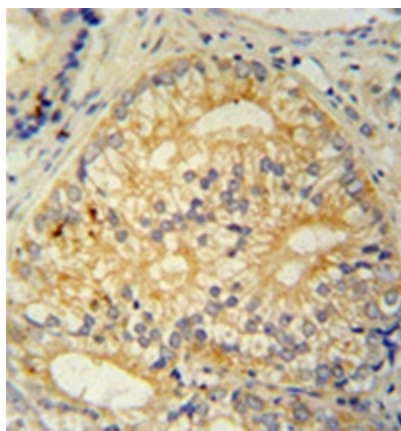
Product Type:	Primary Antibodies
Applications:	IHC, WB
Recommended Dilution:	ELISA: 1/1000. Western Blot: 1/100-1/500. Immunohistochemistry on Paraffin Sections: 1/50-1/100.
Reactivity:	Hamster, Human
Host:	Rabbit
Isotype:	Ig
Clonality:	Polyclonal
Immunogen:	KLH conjugated synthetic peptide between 1-30 amino acids from the N-terminal region of Human CP013.
Specificity:	This antibody recognizes CP013 (N-term).
Formulation:	PBS State: Aff - Purified State: Liquid purified Ig fraction Preservative: 0.09% Sodium Azide
Concentration:	lot specific
Purification:	Affinity Chromatography on Protein A
Conjugation:	Unconjugated
Storage:	Store undiluted at 2-8°C for one month or (in aliquots) at -20°C for longer. Avoid repeated freezing and thawing.
Stability:	Shelf life: one year from despatch.
Gene Name:	chromosome 16 open reading frame 13
Database Link:	Entrez Gene 84326 Human Q96S19
Synonyms:	UPF0585 protein C16orf13
Note:	Molecular Weight: 22578 Da



[View online »](#)

Product images:

Western blot analysis of CP013 Antibody (N-term) in CHO cell line lysates (35ug/lane). This demonstrates the CP013 antibody detected the CP013 protein (arrow).



Formalin fixed and paraffin embedded human prostate carcinoma stained with CP013 Antibody (N-term) followed by peroxidase conjugation of the secondary antibody and DAB staining. This data demonstrates the use of the CP013 antibody (N-term) for immunohistochemistry. Clinical relevance has not been evaluated.