

Product datasheet for **AP51039PU-N**

MTCO1 (COX1) (Center) Rabbit Polyclonal Antibody

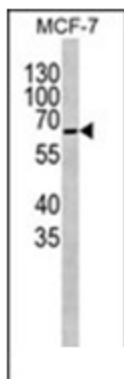
Product data:

Product Type:	Primary Antibodies
Applications:	FC, IF, WB
Recommended Dilution:	ELISA: 1/1000. Western Blot: 1/100-1/500. Immunofluorescence: 1/10-1/50.
Reactivity:	Human
Host:	Rabbit
Isotype:	Ig
Clonality:	Polyclonal
Immunogen:	KLH conjugated synthetic peptide between 202~232 amino acids from the Central region of Human COXI
Specificity:	This antibody recognizes COXI
Formulation:	PBS State: Aff - Purified State: Liquid purified Ig fraction Preservative: 0.09% Sodium Azide
Concentration:	lot specific
Purification:	Affinity Chromatography on Protein A
Conjugation:	Unconjugated
Storage:	Store undiluted at 2-8°C for one month or (in aliquots) at -20°C for longer. Avoid repeated freezing and thawing.
Stability:	Shelf life: one year from despatch.
Gene Name:	mitochondrially encoded cytochrome c oxidase I
Database Link:	P00395
Synonyms:	Cytochrome c oxidase subunit 1, MT-CO1, COI, COXI, MTCO1, Mitochondria Complex IV (Cytochrome C Oxidase)
Note:	Molecular Weight: 57041 Da

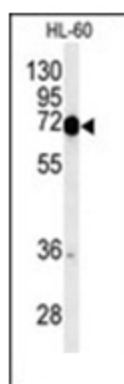


[View online »](#)

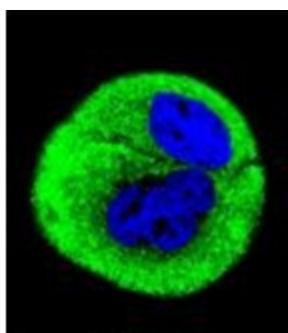
Product images:



Western blot analysis of Complex IV subunit I antibody in MCF-7 cell line lysates. This demonstrates the COXI antibody detected the COXI protein (arrow) (Kindly provided by Dr. John Wu).



Western blot analysis of Complex IV subunit I antibody in HL-60 cell line lysates (35ug/lane). COXI (arrow) was detected using the purified Pab.



Confocal immunofluorescent analysis of Complex IV subunit I antibody with MCF-7 cell followed by Alexa Fluor® 488-conjugated Goat anti-Rabbit IgG (green). DAPI was used to stain the cell nuclear (blue).