

## Product datasheet for **AP51037PU-N**

### COX7A2L (Center) Rabbit Polyclonal Antibody

#### Product data:

Product Type:	Primary Antibodies
Applications:	IHC, WB
Recommended Dilution:	<b>ELISA:</b> 1/1000. <b>Western blot:</b> 1/100 - 1/500. <b>Immunohistochemistry on paraffin sections:</b> 1/10 - 1/50.
Reactivity:	Human, Mouse
Host:	Rabbit
Isotype:	Ig
Clonality:	Polyclonal
Immunogen:	KLH conjugated synthetic peptide between 36-65 amino acids from the Central region of human COX7A2L
Specificity:	This antibody reacts to COX7A2L.
Formulation:	PBS State: Aff - Purified State: Liquid purified Ig fraction Preservative: 0.09% (W/V) sodium azide
Concentration:	lot specific
Purification:	Affinity chromatography on Protein A
Conjugation:	Unconjugated
Storage:	Store undiluted at 2-8°C for one month or (in aliquots) at -20°C for longer. Avoid repeated freezing and thawing.
Stability:	Shelf life: one year from despatch.
Predicted Protein Size:	12615 Da
Gene Name:	cytochrome c oxidase subunit 7A2 like
Database Link:	<a href="#">Entrez Gene 9167 Human</a> <a href="#">O14548</a>



[View online »](#)

**Background:**

Cytochrome c oxidase (COX), the terminal component of the mitochondrial respiratory chain, catalyzes the electron transfer from reduced cytochrome c to oxygen. This component is a heteromeric complex consisting of 3 catalytic subunits encoded by mitochondrial genes and multiple structural subunits encoded by nuclear genes. The mitochondrially-encoded subunits function in electron transfer, and the nuclear-encoded subunits may function in the regulation and assembly of the complex. This nuclear gene encodes a protein similar to polypeptides 1 and 2 of subunit VIIa in the C-terminal region, and also highly similar to the mouse Sig81 protein sequence. This gene is expressed in all tissues, and upregulated in a breast cancer cell line after estrogen treatment. It is possible that this gene represents a regulatory subunit of COX and mediates the higher level of energy production in target cells by estrogen.

**Synonyms:**

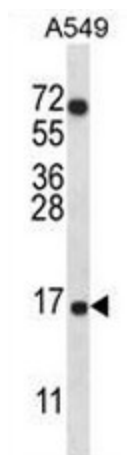
COX7A2L, COX7AR, COX7RP, COX7a-related protein, EB1

**Protein Families:**

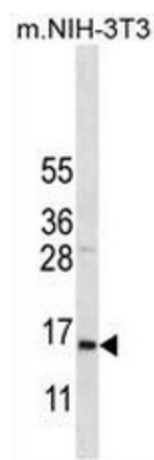
Druggable Genome, Transmembrane

**Protein Pathways:**

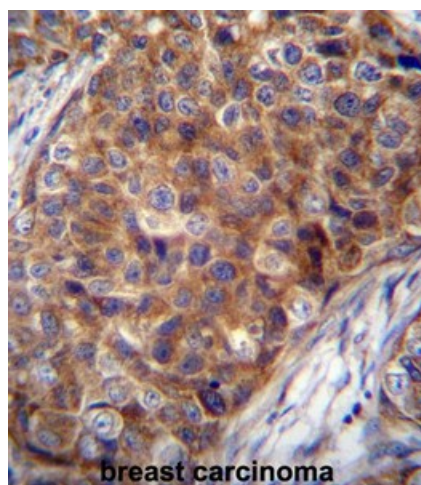
Alzheimer's disease, Cardiac muscle contraction, Huntington's disease, Oxidative phosphorylation, Parkinson's disease

**Product images:**


COX7A2L Antibody (Center) western blot analysis in A549 cell line lysates (35ug/lane). This demonstrates the COX7A2L antibody detected the COX7A2L protein (arrow).



COX7A2L Antibody (Center) western blot analysis in mouse NIH-3T3 cell line lysates (35ug/lane). This demonstrates the COX7A2L antibody detected the COX7A2L protein (arrow).



COX7A2L Antibody (Center) immunohistochemistry analysis in formalin fixed and paraffin embedded human breast carcinoma followed by peroxidase conjugation of the secondary antibody and DAB staining. This data demonstrates the use of COX7A2L Antibody (Center) for immunohistochemistry. Clinical relevance has not been evaluated.