

Product datasheet for **AP51036PU-N**

COX7A1 (Center) Rabbit Polyclonal Antibody

Product data:

Product Type:	Primary Antibodies
Applications:	WB
Recommended Dilution:	ELISA: 1/1000. Western blot: 1/100 - 1/500.
Reactivity:	Human, Mouse
Host:	Rabbit
Isotype:	Ig
Clonality:	Polyclonal
Immunogen:	KLH conjugated synthetic peptide between 9-38 amino acids from the Central region of human COX7A1
Specificity:	This antibody reacts to COX7A1.
Formulation:	PBS State: Aff - Purified State: Liquid purified Ig fraction Preservative: 0.09% (W/V) sodium azide
Concentration:	lot specific
Purification:	Affinity chromatography on Protein A
Conjugation:	Unconjugated
Storage:	Store undiluted at 2-8°C for one month or (in aliquots) at -20°C for longer. Avoid repeated freezing and thawing.
Stability:	Shelf life: one year from despatch.
Predicted Protein Size:	9118 Da
Gene Name:	cytochrome c oxidase subunit 7A1
Database Link:	Entrez Gene 1346 Human P24310



[View online »](#)

Background:

Cytochrome c oxidase (COX), the terminal component of the mitochondrial respiratory chain, catalyzes the electron transfer from reduced cytochrome c to oxygen. This component is a heteromeric complex consisting of 3 catalytic subunits encoded by mitochondrial genes and multiple structural subunits encoded by nuclear genes. The mitochondrially-encoded subunits function in electron transfer, and the nuclear-encoded subunits may function in the regulation and assembly of the complex. This nuclear gene encodes polypeptide 1 (muscle isoform) of subunit VIIa and the polypeptide 1 is present only in muscle tissues. Other polypeptides of subunit VIIa are present in both muscle and nonmuscle tissues, and are encoded by different genes.

Synonyms:

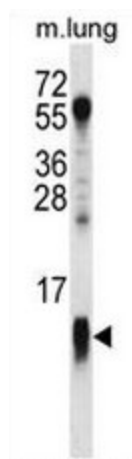
Cytochrome c oxidase polypeptide 7A1, COX7A1, COX7AH

Protein Families:

Transmembrane

Protein Pathways:

Alzheimer's disease, Cardiac muscle contraction, Huntington's disease, Oxidative phosphorylation, Parkinson's disease

Product images:

COX7A1 Antibody (Center) western blot analysis in mouse lung tissue lysates (35ug/lane). This demonstrates the COX7A1 antibody detected the COX7A1 protein (arrow).