

Product datasheet for **AP51035PU-N**

Cytochrome C Oxidase subunit VIb (COX6B1) (C-term) Rabbit Polyclonal Antibody

Product data:

Product Type:	Primary Antibodies
Applications:	IHC, WB
Recommended Dilution:	ELISA: 1/1000. Western blot: 1/100 - 1/500. Immunohistochemistry on paraffin sections: 1/10 - 1/50.
Reactivity:	Human
Host:	Rabbit
Isotype:	Ig
Clonality:	Polyclonal
Immunogen:	KLH conjugated synthetic peptide between 58-86 amino acids from the C-terminal region of human COX6B1
Specificity:	This antibody reacts to COX6B1.
Formulation:	PBS State: Aff - Purified State: Liquid purified Ig fraction Preservative: 0.09% (W/V) sodium azide
Concentration:	lot specific
Purification:	Affinity chromatography on Protein A
Conjugation:	Unconjugated
Storage:	Store undiluted at 2-8°C for one month or (in aliquots) at -20°C for longer. Avoid repeated freezing and thawing.
Stability:	Shelf life: one year from despatch.
Predicted Protein Size:	10192 Da
Gene Name:	Homo sapiens cytochrome c oxidase subunit VIb polypeptide 1 (ubiquitous) (COX6B1)
Database Link:	Entrez Gene 1340 Human P14854



[View online »](#)

Background:

Cytochrome c oxidase (COX), the terminal enzyme of the mitochondrial respiratory chain, catalyzes the electron transfer from reduced cytochrome c to oxygen. It is a heteromeric complex consisting of 3 catalytic subunits encoded by mitochondrial genes and multiple structural subunits encoded by nuclear genes. The mitochondrially-encoded subunits function in electron transfer, and the nuclear-encoded subunits may be involved in the regulation and assembly of the complex. This nuclear gene encodes subunit VIb. Mutations in this gene are associated with severe infantile encephalomyopathy. Three pseudogenes COX6BP-1, COX6BP-2 and COX6BP-3 have been found on chromosomes 7, 17 and 22q13.1-13.2, respectively.

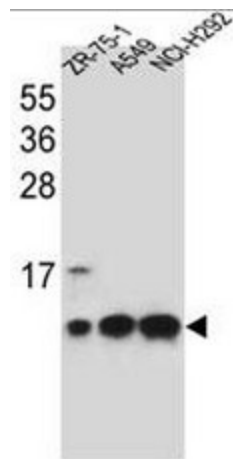
Synonyms:

Cytochrome c oxidase subunit 6B1, COX6B1, COX6B, Mitochondria Complex IV

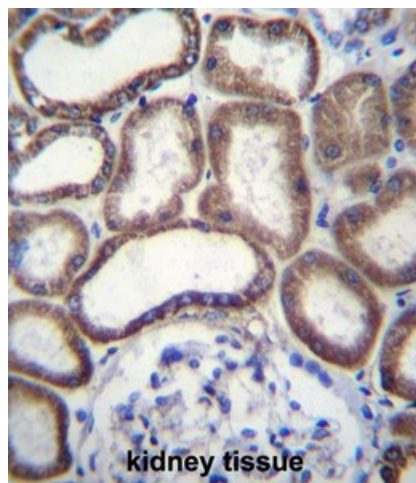
Protein Pathways:

Alzheimer's disease, Cardiac muscle contraction, Huntington's disease, Metabolic pathways, Oxidative phosphorylation, Parkinson's disease

Product images:



COX6B1 Antibody (C-term) western blot analysis in ZR-75-1, A549, NCI-H292 cell line lysates (35ug/lane). This demonstrates the COX6B1 antibody detected the COX6B1 protein (arrow).



COX6B1 Antibody (C-term) immunohistochemistry analysis in formalin fixed and paraffin embedded human kidney tissue followed by peroxidase conjugation of the secondary antibody and DAB staining. This data demonstrates the use of COX6B1 Antibody (C-term) for immunohistochemistry. Clinical relevance has not been evaluated.