

Product datasheet for **AP51033PU-N**

COX6A1 (Center) Rabbit Polyclonal Antibody

Product data:

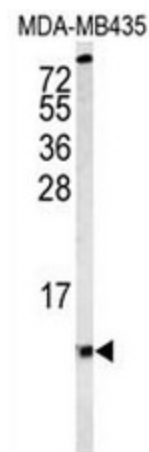
| | |
|-------------------------|--|
| Product Type: | Primary Antibodies |
| Applications: | FC, IHC, WB |
| Recommended Dilution: | Western blot: 1/1000. Immunohistochemistry on paraffin sections: 1/50 - 1/100. Flow cytometry: 1/10 - 1/50. |
| Reactivity: | Human |
| Host: | Rabbit |
| Isotype: | Ig |
| Clonality: | Polyclonal |
| Immunogen: | KLH conjugated synthetic peptide between 50 - 78 amino acids from the Center region of human COX6A1 |
| Specificity: | This antibody reacts to COX6A1. |
| Formulation: | PBS State: Aff - Purified State: Liquid purified Ig fraction Preservative: 0.09% (W/V) sodium azide |
| Concentration: | lot specific |
| Purification: | Affinity chromatography on Protein A followed by peptide affinity purification. |
| Conjugation: | Unconjugated |
| Storage: | Store undiluted at 2-8°C for one month or (in aliquots) at -20°C for longer. Avoid repeated freezing and thawing. |
| Stability: | Shelf life: one year from despatch. |
| Predicted Protein Size: | 12155 Da |
| Gene Name: | cytochrome c oxidase subunit 6A1 |
| Database Link: | Entrez Gene 1337 Human P12074 |
| Background: | This protein is one of the nuclear-coded polypeptide chains of cytochrome c oxidase, the terminal oxidase in mitochondrial electron transport. |



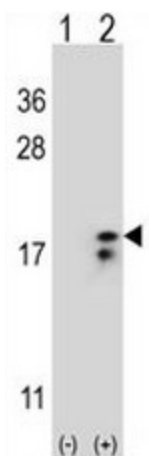
[View online »](#)

| | |
|--------------------------|---|
| Synonyms: | Cytochrome c oxidase subunit 6A1, COX6A1, COX6AL, Mitochondria Complex IV |
| Protein Families: | Transmembrane |
| Protein Pathways: | Alzheimer's disease, Cardiac muscle contraction, Huntington's disease, Metabolic pathways, Oxidative phosphorylation, Parkinson's disease |

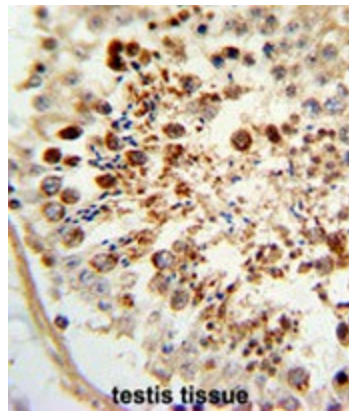
Product images:



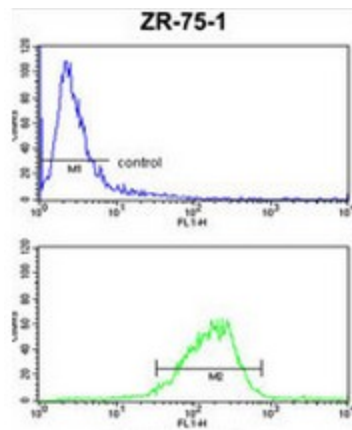
Western blot analysis of COX6A1 Antibody (Center) in MDA-MB435 cell line lysates (35ug/lane). COX6A1 (arrow) was detected using the purified Pab.



Western blot analysis of COX6A1 (arrow) using rabbit polyclonal COX6A1 Antibody (Center). 293 cell lysates (2 ug/lane) either nontransfected (Lane 1) or transiently transfected (Lane 2) with the COX6A1 gene.



Formalin-fixed and paraffin-embedded human testis tissue reacted with COX6A1 Antibody (Center), which was peroxidase-conjugated to the secondary antibody, followed by DAB staining. This data demonstrates the use of this antibody for immunohistochemistry; clinical relevance has not been evaluated.



COX6A1 Antibody (Center) FC analysis of ZR-75-1 cells (bottom histogram) compared to a negative control cell (top histogram). FITC-conjugated goat-anti-rabbit secondary antibodies were used for the analysis.