

Product datasheet for **AP51032PU-N**

COX5A (Center) Rabbit Polyclonal Antibody

Product data:

Product Type:	Primary Antibodies
Applications:	FC, IHC, WB
Recommended Dilution:	ELISA: 1/1000. Western blot: 1/100 - 1/500. Immunohistochemistry on paraffin sections: 1/50 - 1/100. Flow cytometry: 1/10 - 1/50.
Reactivity:	Human
Host:	Rabbit
Isotype:	Ig
Clonality:	Polyclonal
Immunogen:	KLH conjugated synthetic peptide between 52~82 amino acids from the Center region of human COX5A
Specificity:	This antibody reacts to COX5A.
Formulation:	PBS State: Aff - Purified State: Liquid purified Ig fraction Preservative: 0.09% (W/V) sodium azide
Concentration:	lot specific
Purification:	Affinity chromatography on Protein A
Conjugation:	Unconjugated
Storage:	Store undiluted at 2-8°C for one month or (in aliquots) at -20°C for longer. Avoid repeated freezing and thawing.
Stability:	Shelf life: one year from despatch.
Predicted Protein Size:	16762 Da
Gene Name:	cytochrome c oxidase subunit 5A
Database Link:	Entrez Gene 9377 Human P20674



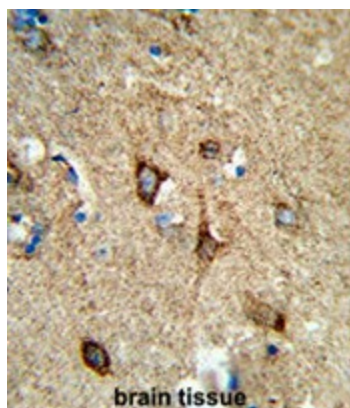
[View online »](#)

Background:	This is the heme A-containing chain of cytochrome c oxidase, the terminal oxidase in mitochondrial electron transport.
Synonyms:	COX5A, Mitochondria Complex IV (Cytochrome C Oxidase) subunit Va, Cytochrome c oxidase subunit 5A
Protein Pathways:	Alzheimer's disease, Cardiac muscle contraction, Huntington's disease, Metabolic pathways, Oxidative phosphorylation, Parkinson's disease

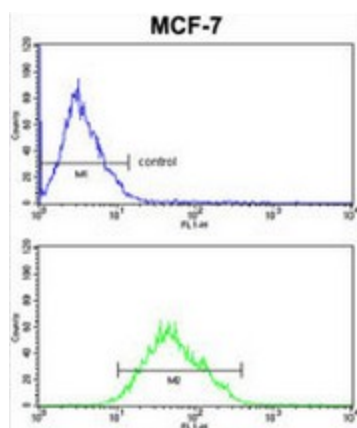
Product images:



Western blot analysis of COX5A Antibody (Center) in HeLa cell line lysates (35ug/lane). COX5A (arrow) was detected using the purified Pab.



Formalin-fixed and paraffin-embedded human brain tissue reacted with COX5A Antibody (Center), which was peroxidase-conjugated to the secondary antibody, followed by DAB staining. This data demonstrates the use of this antibody for immunohistochemistry; clinical relevance has not been evaluated.



COX5A Antibody (Center) (#) FC analysis of MCF-7cells (bottom histogram) compared to a negative control cell (top histogram). FITC-conjugated goat-anti-rabbit secondary antibodies were used for the analysis.