

Product datasheet for **AP51028PU-N**

CORO7 (N-term) Rabbit Polyclonal Antibody

Product data:

Product Type:	Primary Antibodies
Applications:	IHC, WB
Recommended Dilution:	ELISA: 1/1000. Western blot: 1/100 - 1/500. Immunohistochemistry on paraffin sections: 1/50 - 1/100.
Reactivity:	Human
Host:	Rabbit
Isotype:	Ig
Clonality:	Polyclonal
Immunogen:	KLH conjugated synthetic peptide between 176-206 amino acids from the N-terminal region of human CORO7
Specificity:	This antibody reacts to CORO7.
Formulation:	PBS State: Aff - Purified State: Liquid purified Ig fraction Preservative: 0.09% (W/V) sodium azide
Concentration:	lot specific
Purification:	Affinity chromatography on Protein A
Conjugation:	Unconjugated
Storage:	Store undiluted at 2-8°C for one month or (in aliquots) at -20°C for longer. Avoid repeated freezing and thawing.
Stability:	Shelf life: one year from despatch.
Predicted Protein Size:	100605 Da
Gene Name:	coronin 7
Database Link:	Entrez Gene 79585 Human P57737

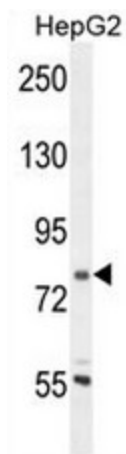


[View online »](#)

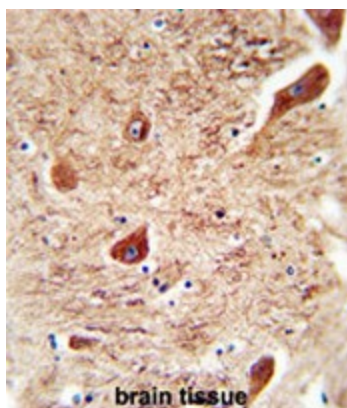
Background: Coronins, such as CORO7, constitute an evolutionarily conserved family of WD-repeat actin-binding proteins. CORO7 plays a role in Golgi complex morphology and function (Rybakin et al., 2004, 2006 [PubMed 15327992] [PubMed 16905771]).

Synonyms: CORO7, 70 kDa WD repeat tumor rejection antigen homolog

Product images:



CORO7 Antibody (N-term) western blot analysis in HepG2 cell line lysates (35ug/lane). This demonstrates the CORO7 antibody detected the CORO7 protein (arrow)



CORO7 antibody (N-term) immunohistochemistry analysis in formalin fixed and paraffin embedded human brain tissue followed by peroxidase conjugation of the secondary antibody and DAB staining. This data demonstrates the use of the CORO7 antibody (N-term) for immunohistochemistry. Clinical relevance has not been evaluated.