

## Product datasheet for **AP51022PU-N**

### **COP (CARD16) (N-term) Rabbit Polyclonal Antibody**

#### **Product data:**

Product Type:	Primary Antibodies
Applications:	FC, WB
Recommended Dilution:	<b>Western blot:</b> 1/1000. <b>Flow Cytometry:</b> 1/10 - 1/50.
Reactivity:	Human
Host:	Rabbit
Isotype:	Ig
Clonality:	Polyclonal
Immunogen:	KLH conjugated synthetic peptide between 37-65 amino acids from the N-terminal region of human COP1
Specificity:	This antibody reacts to COP1.
Formulation:	PBS State: Aff - Purified State: Liquid purified Ig fraction Preservative: 0.09% (W/V) sodium azide
Concentration:	lot specific
Purification:	Chromatography on Protein A, followed by peptide affinity purification.
Conjugation:	Unconjugated
Storage:	Store undiluted at 2-8°C for one month or (in aliquots) at -20°C for longer. Avoid repeated freezing and thawing.
Stability:	Shelf life: one year from despatch.
Predicted Protein Size:	22625 Da
Gene Name:	caspase recruitment domain family member 16
Database Link:	<a href="#">Entrez Gene 114769 Human</a> <a href="#">Q5EG05</a>



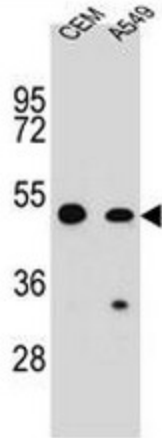
[View online »](#)

**Background:**

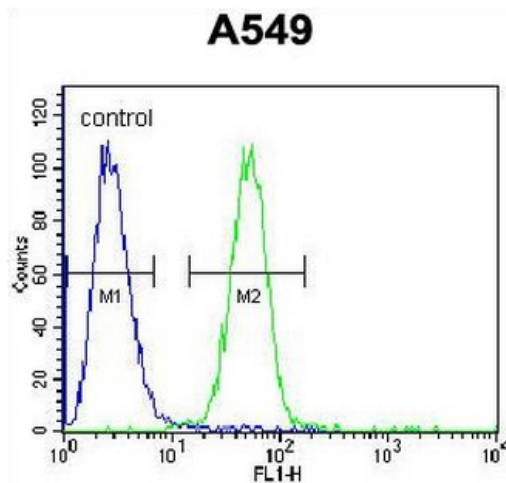
Caspase inhibitor. Acts as a regulator of procaspase-1/CASP1 activation implicated in the regulation of the proteolytic maturation of pro-interleukin-1 beta (IL1B) and its release during inflammation. Inhibits the release of IL1B in response to LPS in monocytes. Also induces NF-kappa-B activation during the pro-inflammatory cytokine response. Also able to inhibit CASP1-mediated neuronal cell death, TNF-alpha, hypoxia-, UV-, and staurosporine-mediated cell death but not ER stress-mediated cell death. Acts by preventing activation of caspases CASP1 and CASP4, possibly by preventing the interaction between CASP1 and RIPK2.

**Synonyms:**

Caspase-1 inhibitor COP, PSEUDO-ICE

**Product images:**


COP1 Antibody (N-term) western blot analysis in CEM, A549 cell line lysates (35ug/lane). This demonstrates the COP1 antibody detected the COP1 protein (arrow).



COP1 Antibody (N-term) flow cytometric analysis of A549 cells (right histogram) compared to a negative control cell (left histogram). FITC-conjugated goat-anti-rabbit secondary antibodies were used for the analysis.