

Product datasheet for **AP51018PU-N**

Collagen VI (COL6A2) (C-term) Rabbit Polyclonal Antibody

Product data:

Product Type:	Primary Antibodies
Applications:	WB
Recommended Dilution:	Peptide ELISA: 1/1000. Western blot: 1/1000.
Reactivity:	Human
Host:	Rabbit
Isotype:	Ig
Clonality:	Polyclonal
Immunogen:	KLH conjugated synthetic peptide between 719-747 amino acids from the C-terminal region of human COL6A2
Specificity:	This antibody reacts to COL6A2.
Formulation:	PBS State: Aff - Purified State: Liquid purified Ig fraction Preservative: 0.09% (W/V) sodium azide
Concentration:	lot specific
Purification:	Affinity chromatography on Protein A
Conjugation:	Unconjugated
Storage:	Store undiluted at 2-8°C for one month or (in aliquots) at -20°C for longer. Avoid repeated freezing and thawing.
Stability:	Shelf life: one year from despatch.
Predicted Protein Size:	108579 Da
Gene Name:	collagen type VI alpha 2
Database Link:	Entrez Gene 1292 Human P12110



[View online »](#)

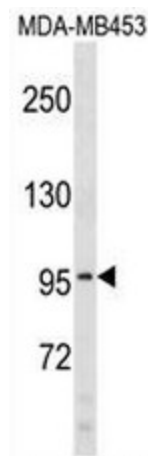
Background: COL6A2 is one of the three alpha chains of type VI collagen, a beaded filament collagen found in most connective tissues. The product of this gene contains several domains similar to von Willebrand Factor type A domains. These domains have been shown to bind extracellular matrix proteins, an interaction that explains the importance of this collagen in organizing matrix components. Mutations in this gene are associated with Bethlem myopathy and Ullrich scleroatonic muscular dystrophy. Three transcript variants have been identified for this gene. [provided by RefSeq].

Synonyms: COL6A2

Protein Families: Secreted Protein

Protein Pathways: ECM-receptor interaction, Focal adhesion

Product images:



COL6A2 Antibody (C-term) western blot analysis in MDA-MB453 cell line lysates (35ug/lane). This demonstrates the COL6A2 antibody detected the COL6A2 protein (arrow).