

## Product datasheet for **AP51013PU-N**

### Collagen I (COL1A2) (N-term) Rabbit Polyclonal Antibody

#### Product data:

Product Type:	Primary Antibodies
Applications:	WB
Recommended Dilution:	<b>ELISA:</b> 1/1000. <b>Western blot:</b> 1/100 - 1/500.
Reactivity:	Human
Host:	Rabbit
Isotype:	Ig
Clonality:	Polyclonal
Immunogen:	KLH conjugated synthetic peptide between 23-51 amino acids from the N-terminal region of human COL1A2
Specificity:	This antibody reacts to COL1A2.
Formulation:	PBS State: Aff - Purified State: Liquid purified Ig fraction Preservative: 0.09% (W/V) sodium azide
Concentration:	lot specific
Purification:	Affinity chromatography on Protein A
Conjugation:	Unconjugated
Storage:	Store undiluted at 2-8°C for one month or (in aliquots) at -20°C for longer. Avoid repeated freezing and thawing.
Stability:	Shelf life: one year from despatch.
Predicted Protein Size:	129314 Da
Gene Name:	collagen type I alpha 2 chain
Database Link:	<a href="#">Entrez Gene 1278 Human P08123</a>



[View online »](#)

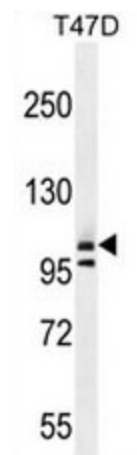
**Background:** This gene encodes the pro-alpha2 chain of type I collagen whose triple helix comprises two alpha1 chains and one alpha2 chain. Type I is a fibril-forming collagen found in most connective tissues and is abundant in bone, cornea, dermis and tendon. Mutations in this gene are associated with osteogenesis imperfecta types I-IV, Ehlers-Danlos syndrome type VIIB, recessive Ehlers-Danlos syndrome Classical type, idiopathic osteoporosis, and atypical Marfan syndrome. Symptoms associated with mutations in this gene, however, tend to be less severe than mutations in the gene for the alpha1 chain of type I collagen (COL1A1) reflecting the different role of alpha2 chains in matrix integrity. Three transcripts, resulting from the use of alternate polyadenylation signals, have been identified for this gene. [provided by R. Dalgleish].

**Synonyms:** COL1A2, Alpha-2 type I collagen

**Protein Families:** Druggable Genome

**Protein Pathways:** ECM-receptor interaction, Focal adhesion

### Product images:



COL1A2 Antibody (N-term) western blot analysis in T47D cell line lysates (35ug/lane). This demonstrates the COL1A2 antibody detected the COL1A2 protein (arrow).