

Product datasheet for **AP51010PU-N**

Collagen XVII (COL17A1) (Center) Rabbit Polyclonal Antibody

Product data:

Product Type:	Primary Antibodies
Applications:	FC, IHC, WB
Recommended Dilution:	Peptide ELISA: 1/1000. Western blot: ~1/2000. Immunohistochemistry on Paraffin Sections: 1/50-1/100. Flow Cytometry: ~1/125.
Reactivity:	Human
Host:	Rabbit
Isotype:	Ig
Clonality:	Polyclonal
Immunogen:	KLH conjugated synthetic peptide selected between amino acids 475 and 504 from the Central region of human COL17A1
Specificity:	This antibody reacts to COL17A1.
Formulation:	PBS State: Aff - Purified State: Liquid purified Ig fraction Preservative: 0.09% (W/V) sodium azide
Concentration:	lot specific
Purification:	Affinity chromatography on Protein A
Conjugation:	Unconjugated
Storage:	Store undiluted at 2-8°C for one month or (in aliquots) at -20°C for longer. Avoid repeated freezing and thawing.
Stability:	Shelf life: one year from despatch.
Predicted Protein Size:	150419 Da
Gene Name:	collagen type XVII alpha 1
Database Link:	Entrez Gene 1308 Human Q9UMD9



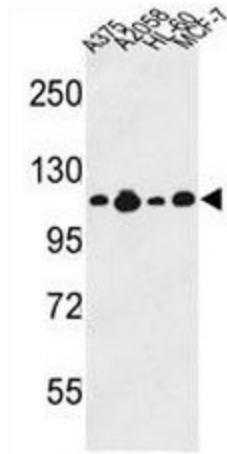
[View online »](#)

Background: COL17A1 encodes the alpha chain of type XVII collagen. Unlike most collagens, collagen XVII is a transmembrane protein. Collagen XVII is a structural component of hemidesmosomes, multiprotein complexes at the dermal-epidermal basement membrane zone that mediate adhesion of keratinocytes to the underlying membrane.

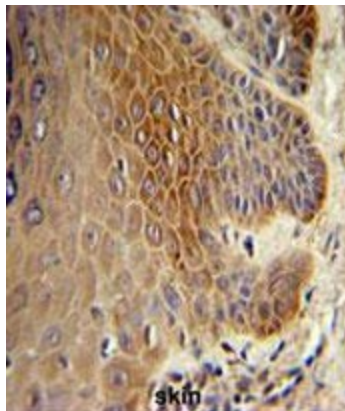
Synonyms: COL17A1, BP180, BPAG2, Bullous pemphigoid antigen 2, LAD-1, LABD97

Protein Families: Transmembrane

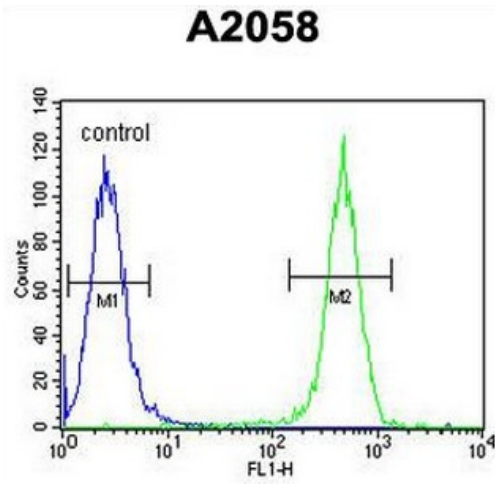
Product images:



Western blot analysis of COL17A1 Antibody (Center) in A375, A2058, HL-60, MCF-7 cell line lysates (35ug/lane). COL17A1 (arrow) was detected using the purified Pab.



COL17A1 Antibody (Center) IHC analysis in formalin fixed and paraffin embedded skin tissue followed by peroxidase conjugation of the secondary antibody and DAB staining. This data demonstrates the use of the COL17A1 Antibody (Center) for immunohistochemistry. Clinical relevance has not been evaluated.



COL17A1 Antibody (Center) flow cytometric analysis of A2058 cells (right histogram) compared to a negative control cell (left histogram). FITC-conjugated goat-anti-rabbit secondary antibodies were used for the analysis.