

## Product datasheet for **AP51005PU-N**

### COG3 (C-term) Rabbit Polyclonal Antibody

#### Product data:

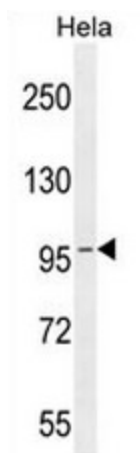
Product Type:	Primary Antibodies
Applications:	WB
Recommended Dilution:	<b>ELISA:</b> 1/1000. <b>Western blot:</b> 1/100 - 1/500.
Reactivity:	Human
Host:	Rabbit
Isotype:	Ig
Clonality:	Polyclonal
Immunogen:	KLH conjugated synthetic peptide between 673-703 amino acids from the C-terminal region of human COG3.
Specificity:	This antibody reacts to COG3.
Formulation:	PBS State: Aff - Purified State: Liquid purified Ig fraction Preservative: 0.09% (W/V) sodium azide
Concentration:	lot specific
Purification:	Affinity chromatography on Protein A
Conjugation:	Unconjugated
Storage:	Store undiluted at 2-8°C for one month or (in aliquots) at -20°C for longer. Avoid repeated freezing and thawing.
Stability:	Shelf life: one year from despatch.
Predicted Protein Size:	94096 Da
Gene Name:	component of oligomeric golgi complex 3
Database Link:	<a href="#">Entrez Gene 83548 Human</a> <a href="#">Q96JB2</a>
Background:	The protein encoded by this gene has similarity to a yeast protein. It seems to be part of a peripheral membrane protein complex localized on cis/medial Golgi cisternae where it may participate in tethering intra-Golgi transport vesicles. [provided by RefSeq].



[View online »](#)

Synonyms: COG complex subunit 3, p94, SEC34

### Product images:



COG3 Antibody (C-term) western blot analysis in HeLa cell line lysates (35ug/lane). This demonstrates the COG3 antibody detected the COG3 protein (arrow).