

## Product datasheet for **AP51004PU-N**

### COG2 (N-term) Rabbit Polyclonal Antibody

#### Product data:

Product Type:	Primary Antibodies
Applications:	FC, IHC, WB
Recommended Dilution:	<b>ELISA:</b> 1/1000. <b>Western blot:</b> 1/100 - 1/500. <b>Immunohistochemistry on paraffin sections:</b> 1/50 - 1/100. <b>Flow cytometric:</b> 1/10 - 1/50.
Reactivity:	Human
Host:	Rabbit
Isotype:	Ig
Clonality:	Polyclonal
Immunogen:	KLH conjugated synthetic peptide between 103~132 amino acids from the N-terminal region of human COG2
Specificity:	This antibody reacts to COG2.
Formulation:	PBS State: Aff - Purified State: Liquid purified Ig fraction Preservative: 0.09% (W/V) sodium azide
Concentration:	lot specific
Purification:	Affinity chromatography on Protein A
Conjugation:	Unconjugated
Storage:	Store undiluted at 2-8°C for one month or (in aliquots) at -20°C for longer. Avoid repeated freezing and thawing.
Stability:	Shelf life: one year from despatch.
Predicted Protein Size:	83208 Da
Gene Name:	component of oligomeric golgi complex 2
Database Link:	<a href="#">Entrez Gene 22796 Human Q14746</a>



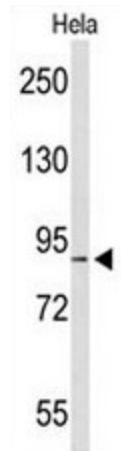
[View online »](#)

**Background:** COG2 encodes a subunit of the conserved oligomeric Golgi complex that is required for maintaining normal structure and activity of the Golgi complex. The encoded protein specifically interacts with the USO1 vesicle docking protein and may be necessary for normal Golgi ribbon formation and trafficking of Golgi enzymes.

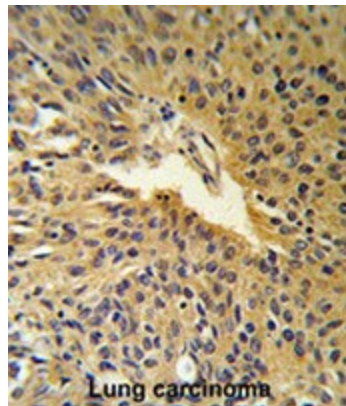
**Synonyms:** COG complex subunit 2, LDLC

**Protein Families:** Druggable Genome

**Product images:**

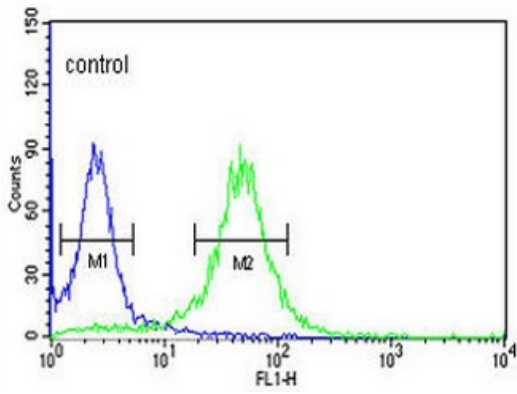


Western blot analysis of COG2 Antibody (N-term) in HeLa cell line lysates (35ug/lane). COG2 (arrow) was detected using the purified Pab.



COG2 Antibody (N-term) IHC analysis in formalin fixed and paraffin embedded human Lung carcinoma followed by peroxidase conjugation of the secondary antibody and DAB staining. This data demonstrates the use of the COG2 Antibody (N-term) for immunohistochemistry. Clinical relevance has not been evaluated.

## Hela



COG2 Antibody (N-term) flow cytometric analysis of HeLa cells (right histogram) compared to a negative control cell (left histogram). FITC-conjugated goat-anti-rabbit secondary antibodies were used for the analysis.