

## Product datasheet for **AP50999PU-N**

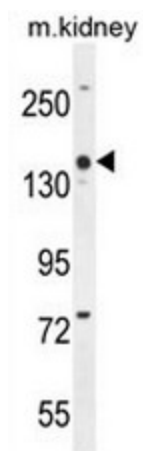
### Cordon bleu homolog (COBL) (N-term) Rabbit Polyclonal Antibody

#### Product data:

Product Type:	Primary Antibodies
Applications:	WB
Recommended Dilution:	<b>ELISA:</b> 1/1000. <b>Western blot:</b> 1/100 - 1/500.
Reactivity:	Human, Mouse
Host:	Rabbit
Isotype:	Ig
Clonality:	Polyclonal
Immunogen:	KLH conjugated synthetic peptide between 191-219 amino acids from the N-terminal region of human COBL
Specificity:	This antibody reacts to COBL.
Formulation:	PBS State: Aff - Purified State: Liquid purified Ig fraction Preservative: 0.09% (W/V) sodium azide
Concentration:	lot specific
Purification:	Affinity chromatography on Protein A
Conjugation:	Unconjugated
Storage:	Store undiluted at 2-8°C for one month or (in aliquots) at -20°C for longer. Avoid repeated freezing and thawing.
Stability:	Shelf life: one year from despatch.
Predicted Protein Size:	135617 Da
Gene Name:	cordon-bleu WH2 repeat protein
Database Link:	<a href="#">Entrez Gene 23242 Human O75128</a>
Synonyms:	Protein cordon-bleu,KIAA0633

[View online »](#)

## Product images:



COBL Antibody (N-term) western blot analysis in mouse kidney tissue lysates (35ug/lane). This demonstrates the COBL antibody detected the COBL protein (arrow).