

Product datasheet for **AP50996PU-N**

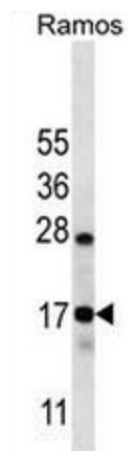
C15orf40 (C-term) Rabbit Polyclonal Antibody

Product data:

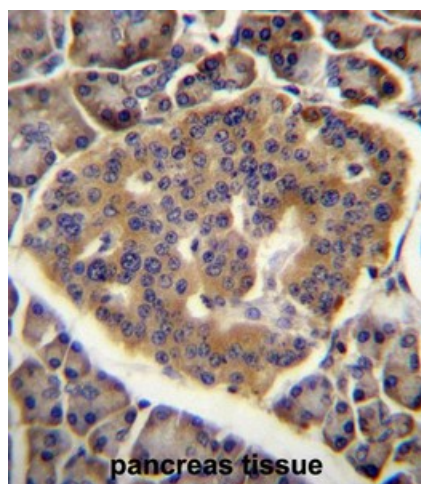
Product Type:	Primary Antibodies
Applications:	IHC, WB
Recommended Dilution:	ELISA: 1/1000. Western blot: 1/100 - 1/500. Immunohistochemistry on paraffin sections: 1/10 - 1/50.
Reactivity:	Human
Host:	Rabbit
Isotype:	Ig
Clonality:	Polyclonal
Immunogen:	KLH conjugated synthetic peptide between 79-108 amino acids from the C-terminal region of human CO40
Specificity:	This antibody reacts to CO40.
Formulation:	PBS State: Aff - Purified State: Liquid purified Ig fraction Preservative: 0.09% (W/V) sodium azide
Concentration:	lot specific
Purification:	Affinity chromatography on Protein A
Conjugation:	Unconjugated
Storage:	Store undiluted at 2-8°C for one month or (in aliquots) at -20°C for longer. Avoid repeated freezing and thawing.
Stability:	Shelf life: one year from despatch.
Predicted Protein Size:	13322 Da
Gene Name:	chromosome 15 open reading frame 40
Database Link:	Entrez Gene 123207 Human Q8WUR7
Synonyms:	UPF0235 protein C15orf40



[View online »](#)

Product images:

CO040 Antibody (C-term) western blot analysis in Ramos cell line lysates (35ug/lane). This demonstrates the CO040 antibody detected the CO040 protein (arrow).



CO040 Antibody (C-term) immunohistochemistry analysis in formalin fixed and paraffin embedded human pancreas tissue followed by peroxidase conjugation of the secondary antibody and DAB staining. This data demonstrates the use of CO040 Antibody (C-term) for immunohistochemistry. Clinical relevance has not been evaluated.