

Product datasheet for **AP50994PU-N**

C15ORF27 (TMEM266) (C-term) Rabbit Polyclonal Antibody

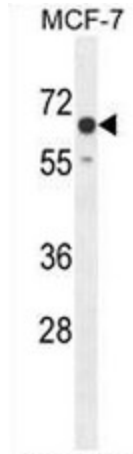
Product data:

Product Type:	Primary Antibodies
Applications:	FC, IHC, WB
Recommended Dilution:	ELISA: 1/1000. Western blot: 1/100 - 1/500. Flow Cytometry: 1/10 - 1/50.
Reactivity:	Human, Mouse
Host:	Rabbit
Isotype:	Ig
Clonality:	Polyclonal
Immunogen:	KLH conjugated synthetic peptide between 506-535 amino acids from the C-terminal region of human CO027
Specificity:	This antibody reacts to CO027.
Formulation:	PBS State: Aff - Purified State: Liquid purified Ig fraction Preservative: 0.09% (W/V) sodium azide
Concentration:	lot specific
Purification:	Affinity chromatography on Protein A
Conjugation:	Unconjugated
Storage:	Store undiluted at 2-8°C for one month or (in aliquots) at -20°C for longer. Avoid repeated freezing and thawing.
Stability:	Shelf life: one year from despatch.
Predicted Protein Size:	58444 Da
Gene Name:	transmembrane protein 266
Database Link:	Entrez Gene 244886 Mouse Entrez Gene 123591 Human Q2M3C6
Protein Families:	Druggable Genome, Transmembrane

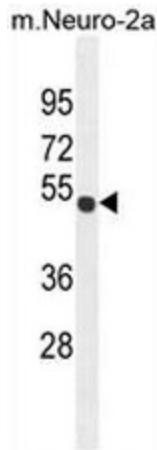


[View online »](#)

Product images:

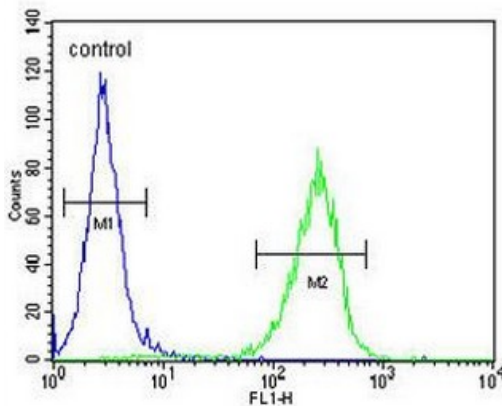


CO027 Antibody (C-term) western blot analysis in MCF-7 cell line lysates (35ug/lane). This demonstrates the CO027 antibody detected the CO027 protein (arrow).



CO027 Antibody (C-term) western blot analysis in mouse Neuro-2a cell line lysates (35ug/lane). This demonstrates the CO027 antibody detected the CO027 protein (arrow).

MCF-7



CO027 Antibody (C-term) flow cytometric analysis of MCF-7 cells (right histogram) compared to a negative control cell (left histogram). FITC-conjugated goat-anti-rabbit secondary antibodies were used for the analysis.