

Product datasheet for **AP50993PU-N**

CNTROB (Center) Rabbit Polyclonal Antibody

Product data:

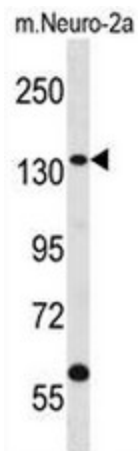
Product Type:	Primary Antibodies
Applications:	WB
Recommended Dilution:	ELISA: 1/1000. Western blot: 1/100 - 1/500.
Reactivity:	Human, Mouse
Host:	Rabbit
Isotype:	Ig
Clonality:	Polyclonal
Immunogen:	KLH conjugated synthetic peptide between 400-430 amino acids from the Central region of human CNTROB
Specificity:	This antibody reacts to CNTROB.
Formulation:	PBS State: Aff - Purified State: Liquid purified Ig fraction Preservative: 0.09% (W/V) sodium azide
Concentration:	lot specific
Purification:	Affinity chromatography on Protein A
Conjugation:	Unconjugated
Storage:	Store undiluted at 2-8°C for one month or (in aliquots) at -20°C for longer. Avoid repeated freezing and thawing.
Stability:	Shelf life: one year from despatch.
Predicted Protein Size:	101253 Da
Gene Name:	centrobin, centriole duplication and spindle assembly protein
Database Link:	Entrez Gene 216846 Mouse Entrez Gene 116840 Human Q8N137
Background:	CNTROB is a centrosomal protein that interacts with BRCA2 (MIM 600185) and is required for centriole duplication and cytokinesis (Zou et al., 2005 [PubMed 16275750]). [supplied by OMIM].



[View online »](#)

Synonyms: LYST-interacting protein 8, CNTROB, LIP8

Product images:



CNTROB Antibody (Center) western blot analysis in mouse Neuro-2a cell line lysates (35ug/lane). This demonstrates the CNTROB antibody detected the CNTROB protein (arrow).