

Product datasheet for **AP50992PU-N**

Contactin 1 (CNTN1) (Center) Rabbit Polyclonal Antibody

Product data:

Product Type:	Primary Antibodies
Applications:	WB
Recommended Dilution:	ELISA: 1/1000. Western blot: 1/100 - 1/500.
Reactivity:	Human
Host:	Rabbit
Isotype:	Ig
Clonality:	Polyclonal
Immunogen:	KLH conjugated synthetic peptide between 641~671 amino acids from the Central region of human CNTN1
Specificity:	This antibody reacts to CNTN1.
Formulation:	PBS State: Aff - Purified State: Liquid purified Ig fraction Preservative: 0.09% (W/V) sodium azide.
Concentration:	lot specific
Purification:	Affinity chromatography on Protein A
Conjugation:	Unconjugated
Storage:	Store undiluted at 2-8°C for one month or (in aliquots) at -20°C for longer. Avoid repeated freezing and thawing.
Stability:	Shelf life: one year from despatch.
Predicted Protein Size:	113320 Da
Gene Name:	contactin 1
Database Link:	Entrez Gene 1272 Human Q12860
Background:	CNTN1 is a member of the immunoglobulin superfamily. It is a glycosylphosphatidylinositol (GPI)-anchored neuronal membrane protein that functions as a cell adhesion molecule. It may play a role in the formation of axon connections in the developing nervous system.

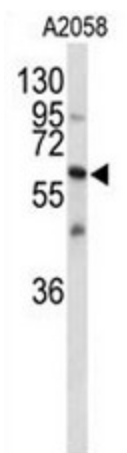


[View online »](#)

Synonyms: Glycoprotein gp135, CNTN1, F3cam

Protein Pathways: Cell adhesion molecules (CAMs)

Product images:



Western blot analysis of CNTN1 Antibody (Center) in A2058 cell line lysates (35ug/lane). CNTN1 (arrow) was detected using the purified Pab.