

Product datasheet for **AP50991PU-N**

CNRIP1 (Center) Rabbit Polyclonal Antibody

Product data:

Product Type:	Primary Antibodies
Applications:	IHC, WB
Recommended Dilution:	ELISA: 1/1000. Western blot: 1/100 - 1/500. Immunohistochemistry on paraffin sections: 1/10 - 1/50.
Reactivity:	Human
Host:	Rabbit
Isotype:	Ig
Clonality:	Polyclonal
Immunogen:	KLH conjugated synthetic peptide between 82-112 amino acids from the Central region of human CNRP1
Specificity:	This antibody reacts to CNRP1.
Formulation:	PBS State: Aff - Purified State: Liquid purified Ig fraction Preservative: 0.09% (W/V) sodium azide
Concentration:	lot specific
Purification:	Affinity chromatography on Protein A
Conjugation:	Unconjugated
Storage:	Store undiluted at 2-8°C for one month or (in aliquots) at -20°C for longer. Avoid repeated freezing and thawing.
Stability:	Shelf life: one year from despatch.
Predicted Protein Size:	18648 Da
Gene Name:	cannabinoid receptor interacting protein 1
Database Link:	Entrez Gene 25927 Human Q96F85



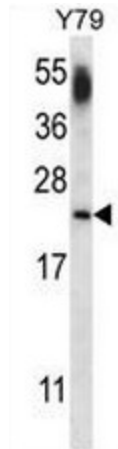
[View online »](#)

Background:

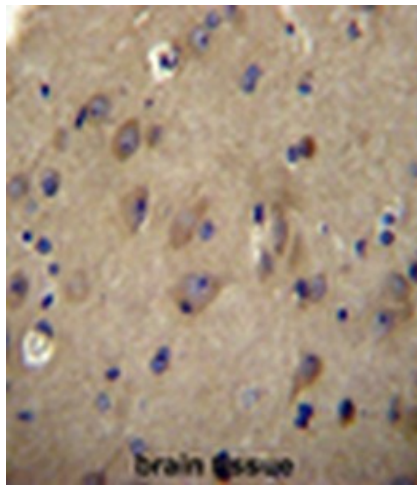
This gene encodes a G-protein coupled receptor which interacts with the C-terminal tail of cannabinoid receptor 1. This receptor plays a role in synaptic plasticity, analgesia, appetite, and neuroprotection. Two transcript variants encoding different isoforms have been described for this gene.

Synonyms:

CRIP-1, CRIP1, C2orf32

Product images:


CNRP1 Antibody (Center) western blot analysis in Y79 cell line lysates (35ug/lane). This demonstrates the CNRP1 antibody detected the CNRP1 protein (arrow).



CNRP1 Antibody (Center) immunohistochemistry analysis in formalin fixed and paraffin embedded human brain tissue followed by peroxidase conjugation of the secondary antibody and DAB staining. This data demonstrates the use of CNRP1 Antibody (Center) for immunohistochemistry. Clinical relevance has not been evaluated.