

Product datasheet for **AP50990PU-N**

CNPY2 (C-term) Rabbit Polyclonal Antibody

Product data:

Product Type:	Primary Antibodies
Applications:	FC, WB
Recommended Dilution:	ELISA: 1/1000. Western blot: 1/100 - 1/500. Flow Cytometry: 1/10 - 1/50.
Reactivity:	Human
Host:	Rabbit
Isotype:	Ig
Clonality:	Polyclonal
Immunogen:	KLH conjugated synthetic peptide between amino acids 140-170 from the C-terminal region of human CNPY
Specificity:	This antibody reacts to CNPY2.
Formulation:	PBS State: Aff - Purified State: Liquid purified Ig fraction Preservative: 0.09% (W/V) sodium azide
Concentration:	lot specific
Purification:	Affinity chromatography on Protein A
Conjugation:	Unconjugated
Storage:	Store undiluted at 2-8°C for one month or (in aliquots) at -20°C for longer. Avoid repeated freezing and thawing.
Stability:	Shelf life: one year from despatch.
Predicted Protein Size:	20652 Da
Gene Name:	canopy FGF signaling regulator 2
Database Link:	Entrez Gene 10330 Human Q9Y2B0

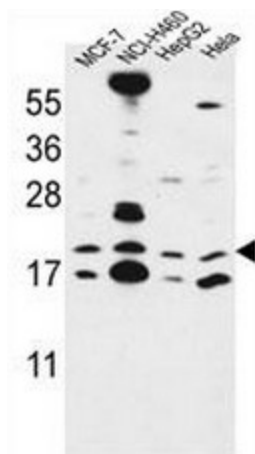


[View online »](#)

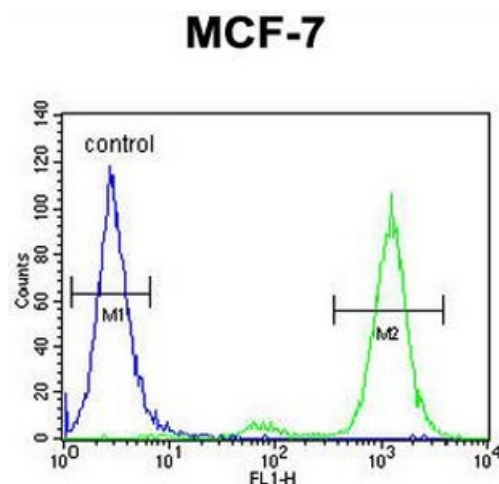
Background: CNPY2 is positive regulator of neurite outgrowth by stabilizing myosin regulatory light chain (MRLC). It prevents MIR-mediated MRLC ubiquitination and its subsequent proteasomal degradation.

Synonyms: Transmembrane protein 4, Canopy homolog 2, MSAP, ZSIG9

Product images:



CNPY2 Antibody (C-term) western blot analysis in MCF-7, NCI-H460, HepG2, Hela cell line lysates (35ug/lane). This demonstrates the CNPY2 antibody detected the CNPY2 protein (arrow).



CNPY2 Antibody (C-term) flow cytometric analysis of MCF-7 cells (right histogram) compared to a negative control cell (left histogram). FITC-conjugated goat-anti-rabbit secondary antibodies were used for the analysis.