

## Product datasheet for **AP50987PU-N**

### **CNN2 (N-term) Rabbit Polyclonal Antibody**

#### **Product data:**

Product Type:	Primary Antibodies
Applications:	IHC, WB
Recommended Dilution:	<b>ELISA:</b> 1/1000. <b>Western blot:</b> 1/100 - 1/500. <b>Immunohistochemistry on paraffin sections:</b> 1/10 - 1/50.
Reactivity:	Human
Host:	Rabbit
Isotype:	Ig
Clonality:	Polyclonal
Immunogen:	KLH conjugated synthetic peptide between 8-36 amino acids from the N-terminal region of human CNN2
Specificity:	This antibody reacts to CNN2.
Formulation:	PBS State: Aff - Purified State: Liquid purified Ig fraction Preservative: 0.09% (W/V) sodium azide
Concentration:	lot specific
Purification:	Affinity chromatography on Protein A
Conjugation:	Unconjugated
Storage:	Store undiluted at 2-8°C for one month or (in aliquots) at -20°C for longer. Avoid repeated freezing and thawing.
Stability:	Shelf life: one year from despatch.
Predicted Protein Size:	33697 Da
Gene Name:	calponin 2
Database Link:	<a href="#">Entrez Gene 1265 Human Q99439</a>



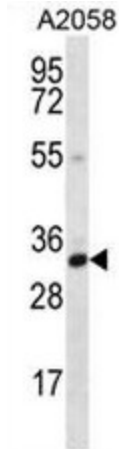
[View online »](#)

**Background:**

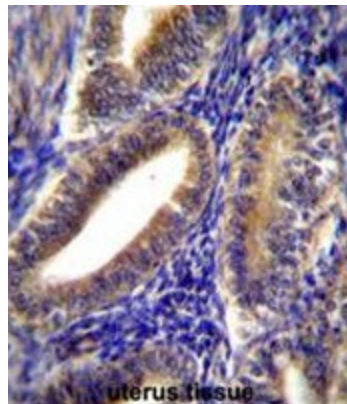
The protein encoded by this gene, which can bind actin, calmodulin, troponin C, and tropomyosin, may function in the structural organization of actin filaments. The encoded protein could play a role in smooth muscle contraction and cell adhesion. Two transcript variants encoding different isoforms have been found for this gene.

**Synonyms:**

Calponin H2, Neutral calponin, CNN2

**Product images:**


CNN2 Antibody (N-term) western blot analysis in A2058 cell line lysates (35ug/lane). This demonstrates the CNN2 antibody detected the CNN2 protein (arrow).



CNN2 Antibody (N-term) immunohistochemistry analysis in formalin fixed and paraffin embedded human uterus tissue followed by peroxidase conjugation of the secondary antibody and DAB staining. This data demonstrates the use of CNN2 Antibody (N-term) for immunohistochemistry. Clinical relevance has not been evaluated.