

## Product datasheet for **AP50985PU-N**

### **CNGB3 (N-term) Rabbit Polyclonal Antibody**

#### **Product data:**

Product Type:	Primary Antibodies
Applications:	WB
Recommended Dilution:	<b>ELISA:</b> 1/1000. <b>Western blot:</b> 1/100 - 1/500.
Reactivity:	Human
Host:	Rabbit
Isotype:	Ig
Clonality:	Polyclonal
Immunogen:	KLH conjugated synthetic peptide between 33-63 amino acids from the N-terminal region of human CNGB3
Specificity:	This antibody reacts to CNGB3.
Formulation:	PBS State: Aff - Purified State: Liquid purified Ig fraction Preservative: 0.09% (W/V) sodium azide
Concentration:	lot specific
Purification:	Affinity chromatography on Protein A
Conjugation:	Unconjugated
Storage:	Store undiluted at 2-8°C for one month or (in aliquots) at -20°C for longer. Avoid repeated freezing and thawing.
Stability:	Shelf life: one year from despatch.
Predicted Protein Size:	92167 Da
Gene Name:	cyclic nucleotide gated channel beta 3
Database Link:	<a href="#">Entrez Gene 54714 Human</a> <a href="#">Q9NQW8</a>



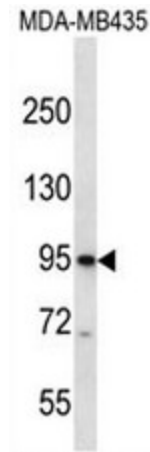
[View online »](#)

**Background:** This gene encodes the beta subunit of a cyclic nucleotide-gated ion channel. The encoded beta subunit appears to play a role in modulation of channel function in cone photoreceptors. This heterotetrameric channel is necessary for sensory transduction, and mutations in this gene have been associated with achromatopsia 3, progressive cone dystrophy, and juvenile macular degeneration, also known as Stargardt Disease.

**Synonyms:** CNG channel beta-3

**Protein Families:** Druggable Genome, Ion Channels: Cyclic nucleotide gated, Transmembrane

**Product images:**



CNGB3 Antibody (N-term) western blot analysis in MDA-MB435 cell line lysates (35ug/lane). This demonstrates the CNGB3 antibody detected the CNGB3 protein (arrow).