

Product datasheet for **AP50982PU-N**

ACKR3 (C-term) Rabbit Polyclonal Antibody

Product data:

Product Type:	Primary Antibodies
Applications:	FC, IHC, WB
Recommended Dilution:	ELISA: 1/1000. Western blot: 1/100 - 1/500. Flow Cytometry: 1/10 - 1/50.
Reactivity:	Human
Host:	Rabbit
Isotype:	Ig
Clonality:	Polyclonal
Immunogen:	KLH conjugated synthetic peptide between 340-370 amino acids from the C-terminal region of human CMKOR1
Specificity:	This antibody reacts to CMKOR1.
Formulation:	PBS State: Aff - Purified State: Liquid purified Ig fraction Preservative: 0.09% (W/V) sodium azide
Concentration:	lot specific
Purification:	Affinity chromatography on Protein A
Conjugation:	Unconjugated
Storage:	Store undiluted at 2-8°C for one month or (in aliquots) at -20°C for longer. Avoid repeated freezing and thawing.
Stability:	Shelf life: one year from despatch.
Gene Name:	atypical chemokine receptor 3
Database Link:	Entrez Gene 57007 Human P25106



[View online »](#)

Background:

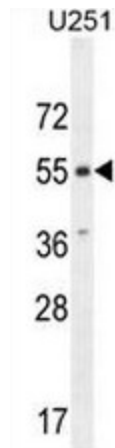
CXCR7 encodes a member of the G-protein coupled receptor family. Although this protein was earlier thought to be a receptor for vasoactive intestinal peptide (VIP), it is now considered to be an orphan receptor, in that its endogenous ligand has not been identified. The protein is also a coreceptor for human immunodeficiency viruses (HIV). Translocations involving this gene and HMGA2 on chromosome 12 have been observed in lipomas. [provided by RefSeq].

Synonyms:

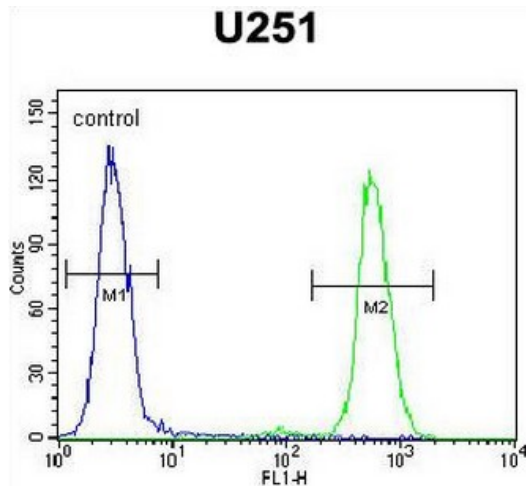
CXC-R7, CXCR-7, CMKOR1, GPR-159, RDC1

Protein Families:

Druggable Genome, GPCR, Transmembrane

Product images:


CMKOR1 Antibody (C-term) western blot analysis in U251 cell line lysates (35ug/lane). This demonstrates the CMKOR1 antibody detected the CMKOR1 protein (arrow).



CMKOR1 Antibody (C-term) flow cytometric analysis of U251 cells (right histogram) compared to a negative control cell (left histogram). FITC-conjugated goat-anti-rabbit secondary antibodies were used for the analysis.