

Product datasheet for **AP50979PU-N**

Clusterin (CLU) (N-term) Rabbit Polyclonal Antibody

Product data:

Product Type:	Primary Antibodies
Applications:	FC, IHC, WB
Recommended Dilution:	ELISA: 1/1000. Western blot: 1/100 - 1/500. Immunohistochemistry on paraffin sections: 1/50 - 1/100. Flow Cytometry: 1/10 - 1/50.
Reactivity:	Human
Host:	Rabbit
Isotype:	Ig
Clonality:	Polyclonal
Immunogen:	KLH conjugated synthetic peptide between 71-99 amino acids from the N-terminal region of human CLU
Specificity:	This antibody reacts to CLU.
Formulation:	PBS State: Aff - Purified State: Liquid purified Ig fraction Preservative: 0.09% (W/V) sodium azide
Concentration:	lot specific
Purification:	Affinity chromatography on Protein A
Conjugation:	Unconjugated
Storage:	Store undiluted at 2-8°C for one month or (in aliquots) at -20°C for longer. Avoid repeated freezing and thawing.
Stability:	Shelf life: one year from despatch.
Predicted Protein Size:	52495 Da
Gene Name:	clusterin
Database Link:	Entrez Gene 1191 Human P10909



[View online »](#)

Background:

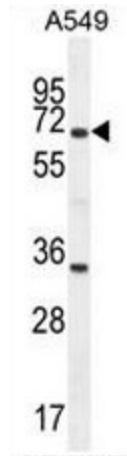
The protein encoded by this gene appears to be involved in several basic biological events such as cell death, tumor progression, and neurodegenerative disorders. However, the function of this protein is unknown. Three transcript variants encoding different isoforms have been found for this gene, and one of them is secreted and processed into a mature form.

Synonyms:

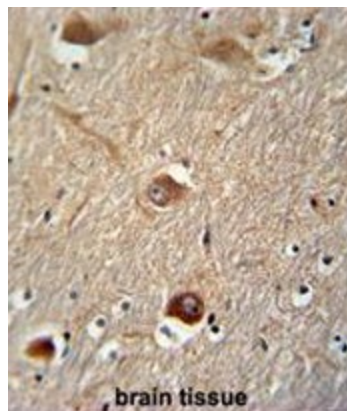
Clusterin, APOJ, CLI, KUB1, AAG4, NA1/NA2, SP-40,40

Protein Families:

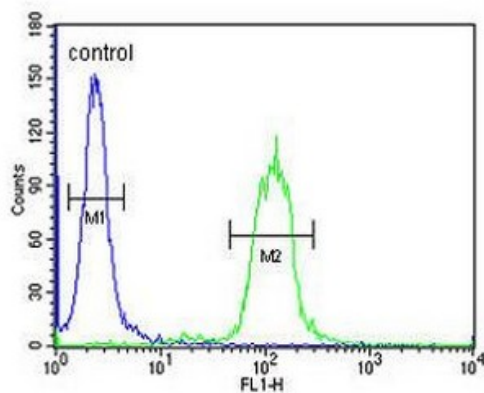
Druggable Genome, Secreted Protein

Product images:


CLU Antibody (N-term) western blot analysis in A549 cell line lysates (35ug/lane). This demonstrates the CLU antibody detected the CLU protein (arrow).



CLU antibody (N-term) immunohistochemistry analysis in formalin fixed and paraffin embedded human brain tissue followed by peroxidase conjugation of the secondary antibody and DAB staining. This data demonstrates the use of the CLU antibody (N-term) for immunohistochemistry. Clinical relevance has not been evaluated.

A549

CLU Antibody (N-term) flow cytometric analysis of A549 cells (right histogram) compared to a negative control cell (left histogram). FITC-conjugated goat-anti-rabbit secondary antibodies were used for the analysis.