

Product datasheet for **AP50977PU-N**

CLRN3 (C-term) Rabbit Polyclonal Antibody

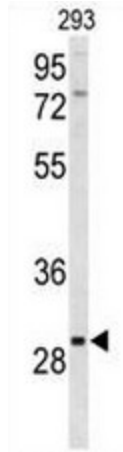
Product data:

Product Type:	Primary Antibodies
Applications:	FC, WB
Recommended Dilution:	ELISA: 1/1000. Western blot: 1/100 - 1/500. Flow Cytometry: 1/10 - 1/50.
Reactivity:	Human
Host:	Rabbit
Isotype:	Ig
Clonality:	Polyclonal
Immunogen:	KLH conjugated synthetic peptide selected from the C-terminal region of human CLRN3
Specificity:	This antibody reacts to CLRN3.
Formulation:	PBS State: Aff - Purified State: Liquid purified Ig fraction Preservative: 0.09% (W/V) sodium azide
Concentration:	lot specific
Purification:	Affinity chromatography on Protein A
Conjugation:	Unconjugated
Storage:	Store undiluted at 2-8°C for one month or (in aliquots) at -20°C for longer. Avoid repeated freezing and thawing.
Stability:	Shelf life: one year from despatch.
Predicted Protein Size:	25321 Da
Gene Name:	clarin 3
Database Link:	Entrez Gene 119467 Human Q8NCR9
Synonyms:	CLRN3, TMEM12, USH3AL1
Protein Families:	Transmembrane

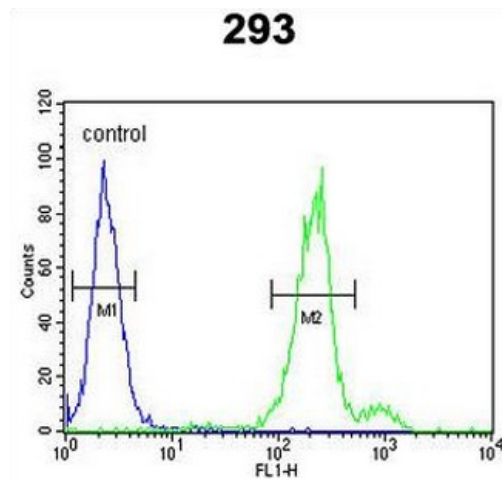


[View online »](#)

Product images:



Western blot analysis of CLRN3 Antibody (C-term) in 293 cell line lysates (35ug/lane). CLRN3 (arrow) was detected using the purified Pab.



CLRN3 Antibody (C-term) flow cytometric analysis of 293 cells (right histogram) compared to a negative control cell (left histogram). FITC-conjugated goat-anti-rabbit secondary antibodies were used for the analysis.